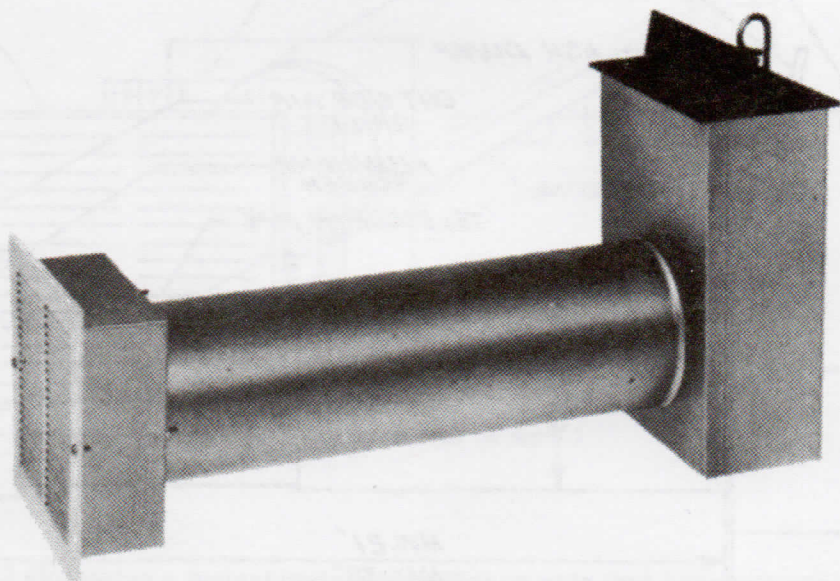


Installation And Operating Instructions For Model "OA" Outside Air Kit For New Construction Masonry Fireplaces

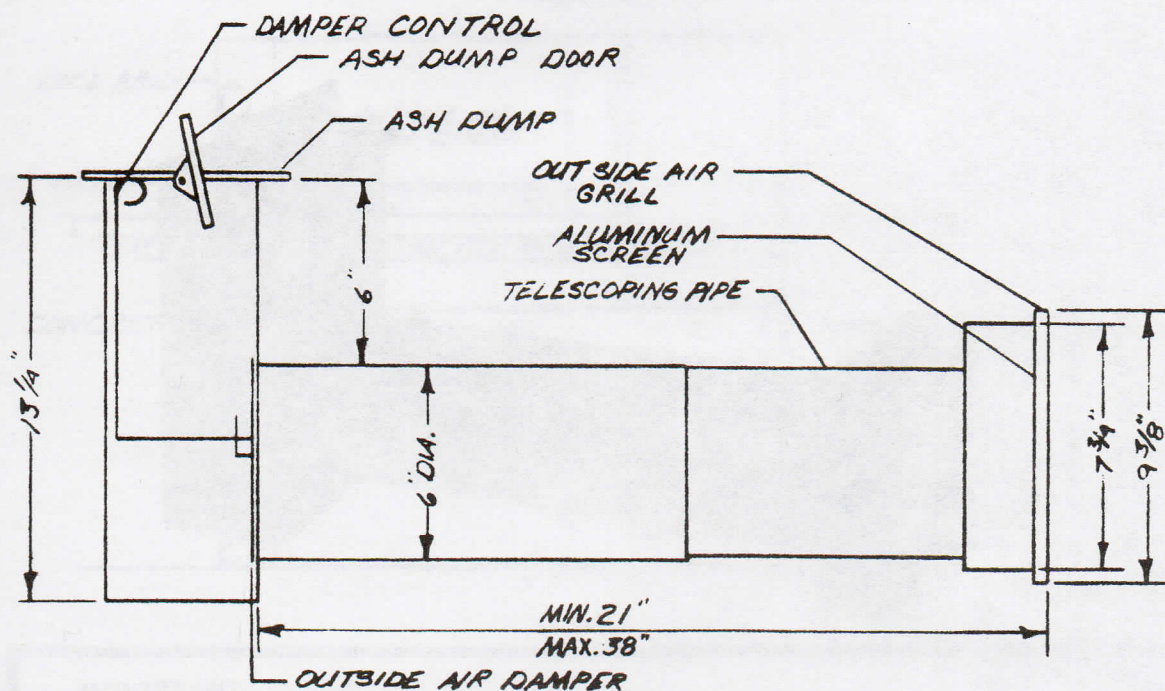


VESTAL MANUFACTURING ENTERPRISES, INC.

P.O. BOX 420 • SWEETWATER, TENNESSEE 37874
TELEPHONE (423) 337-6125

The Vestal Model "OA" Outside Air Kit is designed to provide outside air for fireplace combustion while also serving as a conventional ash dump. Please refer to Figure #1 for parts identification and dimensions.

FIGURE #1



Note: If the ash dump feature is not desired, the model "OA" can be used as an outside air kit only.

Refer to Figure #2 for assembly.

FIGURE #2

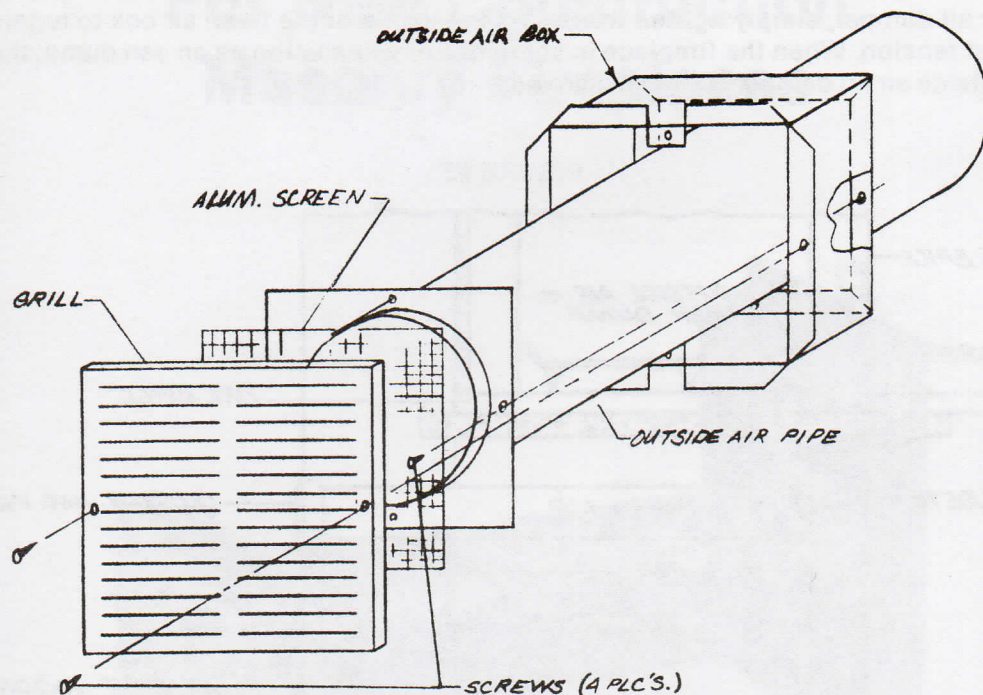
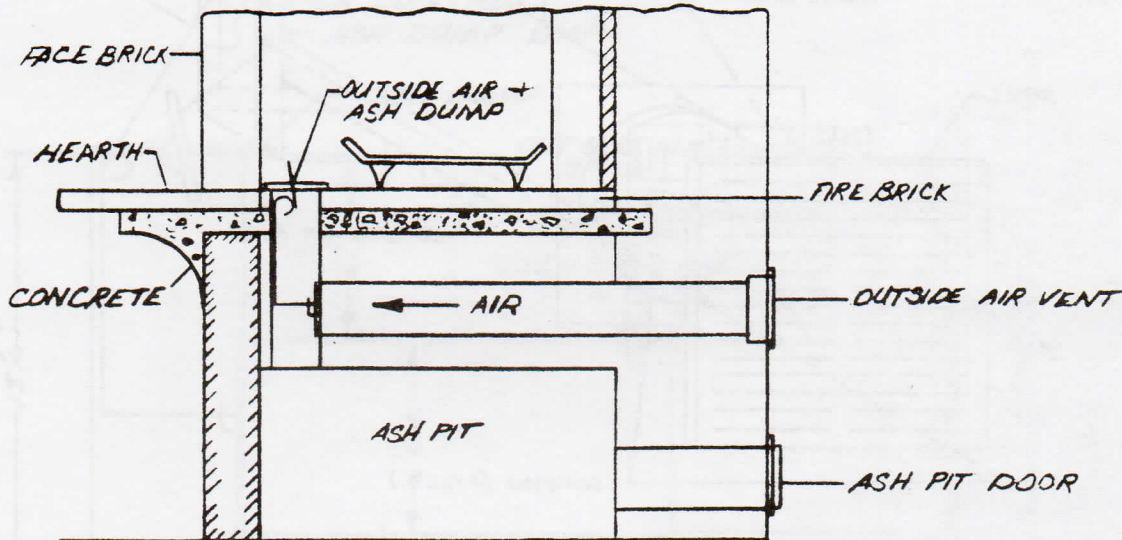


Figure #3 illustrates a typical installation. Please note that adequate clearance has been provided for the masonry hearth foundation and fire brick. The telescopic 6" air supply tube is adjustable from 21" minimum to 38" maximum. If additional tube length is needed, 6" metal duct pipe may be used. Elbows can be used to by-pass obstructions. The outside air inlet grille is positioned in the exterior masonry and should be installed as the masonry is built. The ash dump should be positioned in the center of the fireplace and in the **forward** section of the hearth. Do not install directly beneath the fire area of the hearth. Depending on the depth of the fireplace, the location of the ash dump will vary. For the benefit of the ash dump feature, an ash pit must be constructed. The ash pit is a void in the masonry structure beneath the hearth and is accessible from the outside by a cleanout door. Please note that the ash pit **MUST BE** constructed of masonry to prevent the possibility of a fire hazard.

OPERATING INSTRUCTIONS:

Open the ash dump door and the outside air kit damper. Both should remain open while starting and maintaining the fire. The outside air kit damper is designed with tension that permits various degrees of adjustment depending upon the desired amount of fresh air. If there is a loss of tension on the outside air kit damper, simply tighten the nut on the inside of the fresh air box to regain lost tension. When the fireplace is not in use or when using as an ash dump, the outside air kit damper should be closed.

FIGURE #3



IMPORTANT:

Outside grille should be inspected periodically and repainted when necessary to prevent rust.

VESTAL

CONTRACTOR—PLEASE GIVE INSTRUCTIONS TO HOMEOWNER.