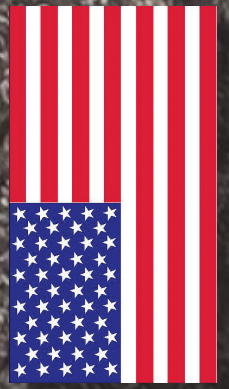


METER BOX RINGS & COVERS



VESTAL

*Quality American Made Products
Since 1946*

MUNICIPAL CASTINGS

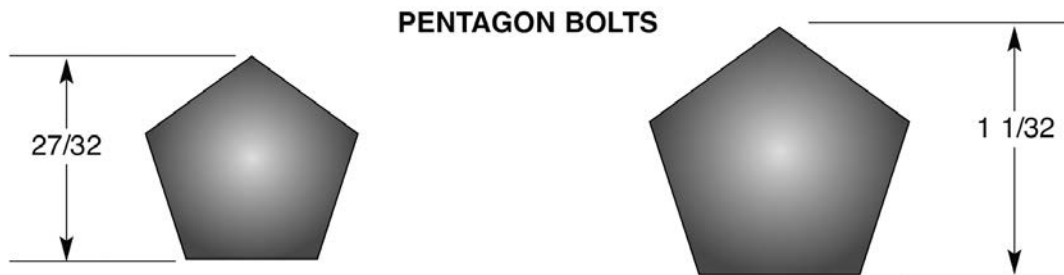
2022 Catalog

**SWEETWATER
TENNESSEE**

MADE IN

METER BOX RINGS & COVERS

| | |
|--|------------|
| Double Yoke Bars | NEW |
| Cast Iron Yoke Bars..... | NEW |
| Yoke Bars with Prongs | NEW |
| Non-Recessed Meter Box Rings & Covers | C-1, C-2 |
| Recessed Meter Box Rings & Covers | C-3, C-4 |
| Iron Meter Box Rings and Covers | C-5 |
| “W” Double Meter Frame & Cover..... | C-6 |
| Spiked Meter Box Rings and Covers..... | C-7 |
| Meter Box Rings and Covers..... | C-8 |
| Non-Recessed Rings and Covers | C-9 |
| Larger Opening Meter Box Rings and Covers..... | C-10 |
| Hook Meter Box Rings and Covers | C-11 |
| Elevator Rings | C-11 |
| Touch Read Plug | C-11 |
| Meter Box Rings Only..... | C-12 |
| Non-Recessed Meter Box Covers Only..... | C-13, C-14 |
| Recessed Meter Box Cover Only | C-15, C-16 |
| Plastic Meter Box Cover Only..... | C-17, C-18 |
| Monitor Rings and Covers | C-19, C-20 |
| Expander Rings..... | C-20 |
| Pit Rings and Covers..... | C-21 |
| Flat Pitsetter Covers | C-21 |
| Round Flat Water Meter Lids..... | C-22 |
| Bell Rings and Cover..... | C-22 |
| Rectangular Meter Lids | C-23 |
| Oval Water Meter Lids..... | C-24 |



Vestal Pentagon Bolts are made in the sizes shown above. The small size (27/32) is known as the standard or small bolt (SN). The large size (1-1/32) is known as the large bolt (LN). Please specify size preference when ordering.

Lifter Worm Lock - All locking lids feature an unique “worm” type lock. The lock has a hard cast iron nut that rotates and applies a screw-jack action between the lid and cover to break any seal of ice or dirt. The bolt is constructed of forged silicon bronze and features a pentagon bolt head. This bolt acts as a lifter handle for the lid for easy opening and closing.

Special Name Lids - Vestal Manufacturing owns and operates its own foundry, which gives us the ability to put custom names on many of the cast iron rings and covers that we produce. This could be either the name of a distributor, water district or municipality using the product. Contact Vestal or your local sales representative for more information.

Touch Read Holes - Many Vestal covers can be ordered with a 1.75” hole in the lid for placement of a touch reading device. These lids are identified by the letters “TR” after the model number. Lids with two touch read holes are identified by “2TR”. Please specify when ordering if you want your lids to have these features.

Recessed Touch Read Holes - Vestal now offers many lids with 4” and 7” recessed touch read holes. These lids are identified by the letters RTR after the model number. Lids with two touch read holes are identified by 2RTR.



Meter Setting

Double Yoke Bars



| Model No. | Meter Size | Bar Width | Standard Package | | Vestal No. |
|-----------|-------------|-----------|------------------|----------|------------|
| | | | Quantity | Wt. Lbs. | |
| D-58 | 5/8" | 7" | 1 | 7 lbs. | 32-172 |
| D-5834 | 5/8" x 3/4" | 7" | 1 | 8 lbs. | 32-173 |
| D-34 | 3/4" | 7" | 1 | 9 lbs. | 32-174 |
| D-1 | 1" | 9" | 1 | 15 lbs. | 32-175 |



Vestal Manufacturing Enterprises, Inc.
P.O. Box 420 • Sweetwater, TN 37874
Phone: 800-456-9562 • Fax: 423-337-2003
www.vestalmfg.com





Cast Iron Yoke Bars



| Model No. | Meter Size | Standard Package | | Vestal No. |
|-----------|-------------|------------------|----------|------------|
| | | Quantity | Wt. Lbs. | |
| V-58 | 5/8" | 10 | 38 | 32-164 |
| V-5834 | 5/8" x 3/4" | 10 | 41 | 32-165 |
| V-34 | 3/4" | 10 | 46 | 32-166 |
| V-1 | 1" | 6 | 46 | 32-167 |



Vestal Manufacturing Enterprises, Inc.
P.O. Box 420 • Sweetwater, TN 37874
Phone: 800-456-9562 • Fax: 423-337-2003
www.vestalmfg.com





Yoke Bars with Prongs



| Model No. | Meter Size | Number of Prongs | Standard Package | | Vestal No. |
|-----------|-------------|------------------|------------------|----------|------------|
| | | | Quantity | Wt. Lbs. | |
| V-58P | 5/8" | 3 | 10 | 41 | 32-168 |
| V-5834P | 5/8" x 3/4" | 3 | 10 | 44 | 32-169 |
| V-34P | 3/4" | 3 | 10 | 49 | 32-170 |
| V-1P | 1" | 1 | 6 | 49 | 32-171 |



Vestal Manufacturing Enterprises, Inc.
P.O. Box 420 • Sweetwater, TN 37874
Phone: 800-456-9562 • Fax: 423-337-2003
www.vestalmfg.com





NON-RECESSED CAST IRON METER BOX RINGS & COVERS*

| Part Code | Model # | Description | Tile Size | Bolt | Lid | Wt. |
|-----------|--------------------|---------------------------------|-----------|--------|------|-----|
| 32-036 | RMC-15 | Non-Locking R&C | 15 | N/A | 11.5 | 29 |
| 32-033 | RMC-15L W/SN | Locking R&C | 15 | 27/32 | 11.5 | 29 |
| 32-064 | RMC-15L W/LN | Locking R&C | 15 | 1-1/32 | 11.5 | 29 |
| 32-236 | RMC-15 W/TR | Non-Locking R&C, Touch Read | 15 | N/A | 11.5 | 29 |
| 32-233 | RMC-15L W/SN W/TR | Locking R&C, Touch Read | 15 | 27/32 | 11.5 | 29 |
| 32-264 | RMC-15L W/LN W/TR | Locking R&C, Touch Read | 15 | 1-1/32 | 11.5 | 29 |
| 32-340 | RMC-15 W/2TR | Non-Locking R&C w/ 2 Touch Read | 15 | N/A | 11.5 | 29 |
| 32-345 | RMC-15L W/SN W/2TR | Locking R&C w/ 2 Touch Read | 15 | 27/32 | 11.5 | 29 |
| 32-346 | RMC-15L W/LN W/2TR | Locking R&C w/ 2 Touch Read | 15 | 1-1/32 | 11.5 | 29 |

| Part Code | Model # | Description | Tile Size | Bolt | Lid | Wt. |
|-----------|--------------------|---------------------------------|-----------|--------|------|-----|
| 32-022 | RMC-18 | Non-Locking R&C | 18 | N/A | 11.5 | 32 |
| 32-023 | RMC-18L W/SN | Locking R&C | 18 | 27/32 | 11.5 | 32 |
| 32-061 | RMC-18L W/LN | Locking R&C | 18 | 1-1/32 | 11.5 | 32 |
| 32-222 | RMC-18 W/TR | Non-Locking R&C, Touch Read | 18 | N/A | 11.5 | 32 |
| 32-223 | RMC-18L W/SN W/TR | Locking R&C, Touch Read | 18 | 27/32 | 11.5 | 32 |
| 32-261 | RMC-18L W/LN W/TR | Locking R&C, Touch Read | 18 | 1-1/32 | 11.5 | 32 |
| 32-349 | RMC-18 W/2TR | Non-Locking R&C w/ 2 Touch Read | 18 | N/A | 11.5 | 32 |
| 32-354 | RMC-18L W/SN W/2TR | Locking R&C w/ 2 Touch Read | 18 | 27/32 | 11.5 | 32 |
| 32-355 | RMC-18L W/LN W/2TR | Locking R&C w/ 2 Touch Read | 18 | 1-1/32 | 11.5 | 32 |

| Part Code | Model # | Description | Tile Size | Bolt | Lid | Wt. |
|-----------|--------------------|---------------------------------|-----------|--------|------|-----|
| 32-025 | RMC-20 | Non-Locking R&C | 20 | N/A | 11.5 | 33 |
| 32-026 | RMC-20L W/SN | Locking R&C | 20 | 27/32 | 11.5 | 33 |
| 32-062 | RMC-20L W/LN | Locking R&C | 20 | 1-1/32 | 11.5 | 33 |
| 32-225 | RMC-20 W/TR | Non-Locking R&C, Touch Read | 20 | N/A | 11.5 | 33 |
| 32-226 | RMC-20L W/SN W/TR | Locking R&C, Touch Read | 20 | 27/32 | 11.5 | 33 |
| 32-262 | RMC-20L W/LN W/TR | Locking R&C, Touch Read | 20 | 1-1/32 | 11.5 | 33 |
| 32-358 | RMC-20 w/2TR | Non-Locking R&C w/ 2 Touch Read | 20 | N/A | 11.5 | 33 |
| 32-363 | RMC-20L w/SN w/2TR | Locking R&C w/ 2 Touch Read | 20 | 27/32 | 11.5 | 33 |
| 32-364 | RMC-20L w/LN w/2TR | Locking R&C w/ 2 Touch Read | 20 | 1-1/32 | 11.5 | 33 |

| Part Code | Model # | Description | Tile Size | Bolt | Lid | Wt. |
|-----------|--------------------|---------------------------------|-----------|--------|------|-----|
| 32-093 | RMC-21 | Non-Locking R&C | 21 | N/A | 11.5 | 38 |
| 32-094 | RMC-21L W/SN | Locking R&C | 21 | 27/32 | 11.5 | 39 |
| 32-095 | RMC-21L W/LN | Locking R&C | 21 | 1-1/32 | 11.5 | 39 |
| 32-367 | RMC-21 W/TR | Non-Locking R&C, Touch Read | 21 | N/A | 11.5 | 39 |
| 32-294 | RMC-21L W/SN W/TR | Locking R&C, Touch Read | 21 | 27/32 | 11.5 | 39 |
| 32-295 | RMC-21L W/LN W/TR | Locking R&C, Touch Read | 21 | 1-1/32 | 11.5 | 39 |
| 32-368 | RMC-21 W/2TR | Non-Locking R&C w/ 2 Touch Read | 21 | N/A | 11.5 | 39 |
| 32-373 | RMC-21L W/SN W/2TR | Locking R&C w/ 2 Touch Read | 21 | 27/32 | 11.5 | 39 |
| 32-374 | RMC-21L W/LN W/2TR | Locking R&C w/ 2 Touch Read | 21 | 1-1/32 | 11.5 | 39 |

* All RMC-20 & RMC-21 series rings & covers feature special designed hinge to support lid when open.

* Special hinge "X" feature available on RMC-18 by request.

VESTAL MANUFACTURING
Sweetwater, TN 37874
800-456-9562



NON-RECESSED CAST IRON METER BOX RINGS & COVERS W/4" RECESSED TOUCH HOLES

| Part Code | Model # | Description | Tile Size | Bolt | Lid | Wt. |
|-----------|---------------------|------------------------------------|-----------|--------|------|-----|
| 32-341 | RMC-15 W/RTR | Non-Locking R&C, W/Rec. Touch Read | 15 | N/A | 11.5 | 31 |
| 32-342 | RMC-15 W/2RTR | Non-Locking R&C, W/Rec. Touch Read | 15 | N/A | 11.5 | 31 |
| 32-343 | RMC-15L W/SN W/RTR | Locking R&C, W/Rec. Touch Read | 15 | 27/32 | 11.5 | 32 |
| 32-344 | RMC-15L W/LN W/RTR | Locking R&C, W/Rec. Touch Read | 15 | 1-1/32 | 11.5 | 32 |
| 32-347 | RMC-15L W/SN W/2RTR | Locking R&C, W/Rec. Touch Read | 15 | 27/32 | 11.5 | 32 |
| 32-348 | RMC-15L W/LN W/2RTR | Locking R&C, W/Rec. Touch Read | 15 | 1-1/32 | 11.5 | 32 |

| Part Code | Model # | Description | Tile Size | Bolt | Lid | Wt. |
|-----------|---------------------|------------------------------------|-----------|--------|------|-----|
| 32-350 | RMC-18 W/RTR | Non-Locking R&C, W/Rec. Touch Read | 18 | N/A | 11.5 | 33 |
| 32-351 | RMC-18 W/2RTR | Non-Locking R&C, W/Rec. Touch Read | 18 | N/A | 11.5 | 33 |
| 32-352 | RMC-18L W/SN W/RTR | Locking R&C, W/Rec. Touch Read | 18 | 27/32 | 11.5 | 34 |
| 32-353 | RMC-18L W/LN W/RTR | Locking R&C, W/Rec. Touch Read | 18 | 1-1/32 | 11.5 | 34 |
| 32-356 | RMC-18L W/SN W/2RTR | Locking R&C, W/Rec. Touch Read | 18 | 27/32 | 11.5 | 34 |
| 32-357 | RMC-18L W/LN W/2RTR | Locking R&C, W/Rec. Touch Read | 18 | 1-1/32 | 11.5 | 34 |

| Part Code | Model # | Description | Tile Size | Bolt | Lid | Wt. |
|-----------|---------------------|------------------------------------|-----------|--------|------|-----|
| 32-359 | RMC-20 W/RTR | Non-Locking R&C, W/Rec. Touch Read | 20 | N/A | 11.5 | 36 |
| 32-360 | RMC-20 W/2RTR | Non-Locking R&C, W/Rec. Touch Read | 20 | N/A | 11.5 | 36 |
| 32-361 | RMC-20L W/SN W/RTR | Locking R&C, W/Rec. Touch Read | 20 | 27/32 | 11.5 | 37 |
| 32-362 | RMC-20L W/LN W/RTR | Locking R&C, W/Rec. Touch Read | 20 | 1-1/32 | 11.5 | 37 |
| 32-365 | RMC-20L W/SN W/2RTR | Locking R&C, W/Rec. Touch Read | 20 | 27/32 | 11.5 | 37 |
| 32-366 | RMC-20L W/LN W/2RTR | Locking R&C, W/Rec. Touch Read | 20 | 1-1/32 | 11.5 | 37 |

| Part Code | Model # | Description | Tile Size | Bolt | Lid | Wt. |
|-----------|---------------------|------------------------------------|-----------|--------|------|-----|
| 32-369 | RMC-21 W/RTR | Non-Locking R&C, W/Rec. Touch Read | 21 | N/A | 11.5 | 42 |
| 32-370 | RMC-21 W/2RTR | Non-Locking R&C, W/Rec. Touch Read | 21 | N/A | 11.5 | 42 |
| 32-371 | RMC-21L W/SN W/RTR | Locking R&C, W/Rec. Touch Read | 21 | 27/32 | 11.5 | 43 |
| 32-372 | RMC-21L W/LN W/RTR | Locking R&C, W/Rec. Touch Read | 21 | 1-1/32 | 11.5 | 43 |
| 32-375 | RMC-21L W/SN W/2RTR | Locking R&C, W/Rec. Touch Read | 21 | 27/32 | 11.5 | 43 |
| 32-376 | RMC-21L W/LN W/2RTR | Locking R&C, W/Rec. Touch Read | 21 | 1-1/32 | 11.5 | 43 |



RECESSED CAST IRON METER BOX RINGS & COVERS

| Part Code | Model # | Description | Tile Size | Bolt | Lid | Wt. |
|-----------|---------------------|---------------------------------|-----------|--------|------|-----|
| 32-037 | RMRC-15 | Non-Locking R&C | 15 | N/A | 11.5 | 29 |
| 32-038 | RMRC-15L W/SN | Locking R&C | 15 | 27/32 | 11.5 | 29 |
| 32-065 | RMRC-15L W/LN | Locking R&C | 15 | 1-1/32 | 11.5 | 29 |
| 32-237 | RMRC-15 W/TR | Non-Locking R&C, Touch Read | 15 | N/A | 11.5 | 29 |
| 32-238 | RMRC-15L W/SN W/TR | Locking R&C, Touch Read | 15 | 27/32 | 11.5 | 29 |
| 32-265 | RMRC-15L W/LN W/TR | Locking R&C, Touch Read | 15 | 1-1/32 | 11.5 | 29 |
| 32-377 | RMRC-15 W/2TR | Non-Locking R&C w/ 2 Touch Read | 15 | N/A | 11.5 | 29 |
| 32-382 | RMRC-15L W/SN W/2TR | Locking R&C w/ 2 Touch Read | 15 | 27/32 | 11.5 | 29 |
| 32-383 | RMRC-15L W/LN W/2TR | Locking R&C w/ 2 Touch Read | 15 | 1-1/32 | 11.5 | 29 |

| Part Code | Model # | Description | Tile Size | Bolt | Lid | Wt. |
|-----------|---------------------|---------------------------------|-----------|--------|------|-----|
| 32-040 | RMRC-18 | Non-Locking R&C | 18 | N/A | 11.5 | 39 |
| 32-041 | RMRC-18L W/SN | Locking R&C | 18 | 27/32 | 11.5 | 39 |
| 32-066 | RMRC-18L W/LN | Locking R&C | 18 | 1-1/32 | 11.5 | 39 |
| 32-240 | RMRC-18 W/TR | Non-Locking R&C, Touch Read | 18 | N/A | 11.5 | 39 |
| 32-241 | RMRC-18L W/SN W/TR | Locking R&C, Touch Read | 18 | 27/32 | 11.5 | 39 |
| 32-266 | RMRC-18L W/LN W/TR | Locking R&C, Touch Read | 18 | 1-1/32 | 11.5 | 39 |
| 32-386 | RMRC-18 W/2TR | Non-Locking R&C w/ 2 Touch Read | 18 | N/A | 11.5 | 39 |
| 32-391 | RMRC-18L W/SN W/2TR | Locking R&C w/ 2 Touch Read | 18 | 27/32 | 11.5 | 39 |
| 32-392 | RMRC-18L W/LN W/2TR | Locking R&C w/ 2 Touch Read | 18 | 1-1/32 | 11.5 | 39 |

| Part Code | Model # | Description | Tile Size | Bolt | Lid | Wt. |
|-----------|---------------------|---------------------------------|-----------|--------|------|-----|
| 32-054 | RMRC-20 | Non-Locking R&C | 20 | N/A | 11.5 | 45 |
| 32-059 | RMRC-20L W/SN | Locking R&C | 20 | 27/32 | 11.5 | 45 |
| 32-071 | RMRC-20L W/LN | Locking R&C | 20 | 1-1/32 | 11.5 | 45 |
| 32-254 | RMRC-20 W/TR | Non-Locking R&C, Touch Read | 20 | N/A | 11.5 | 45 |
| 32-259 | RMRC-20L W/SN W/TR | Locking R&C, Touch Read | 20 | 27/32 | 11.5 | 45 |
| 32-271 | RMRC-20L W/LN W/TR | Locking R&C, Touch Read | 20 | 1-1/32 | 11.5 | 45 |
| 32-421 | RMRC-20 W/2TR | Non-Locking R&C w/ 2 Touch Read | 20 | N/A | 11.5 | 45 |
| 32-426 | RMRC-20L W/SN W/2TR | Locking R&C w/ 2 Touch Read | 20 | 27/32 | 11.5 | 45 |
| 32-427 | RMRC-20L W/LN W/2TR | Locking R&C w/ 2 Touch Read | 20 | 1-1/32 | 11.5 | 45 |

| Part Code | Model # | Description | Tile Size | Bolt | Lid | Wt. |
|-----------|---------------------|---------------------------------|-----------|--------|------|-----|
| 32-097 | RMRC-21 | Non-Locking R&C | 21 | N/A | 11.5 | 49 |
| 32-098 | RMRC-21L W/SN | Locking R&C | 21 | 27/32 | 11.5 | 49 |
| 32-099 | RMRC-21L W/LN | Locking R&C | 21 | 1-1/32 | 11.5 | 49 |
| 32-430 | RMRC-21 W/TR | Non-Locking R&C, Touch Read | 21 | N/A | 11.5 | 49 |
| 32-298 | RMRC-21L W/SN W/TR | Locking R&C, Touch Read | 21 | 27/32 | 11.5 | 49 |
| 32-299 | RMRC-21L W/LN W/TR | Locking R&C, Touch Read | 21 | 1-1/32 | 11.5 | 49 |
| 32-431 | RMRC-21 W/2TR | Non-Locking R&C w/ 2 Touch Read | 21 | N/A | 11.5 | 49 |
| 32-436 | RMRC-21L W/SN W/2TR | Locking R&C w/ 2 Touch Read | 21 | 27/32 | 11.5 | 49 |
| 32-437 | RMRC-21L W/LN W/2TR | Locking R&C w/ 2 Touch Read | 21 | 1-1/32 | 11.5 | 49 |



RECESSED CAST IRON METER BOX RINGS & COVERS W/4" RECESSED TOUCH HOLES

| Part Code | Model # | Description | Tile Size | Bolt | Lid | Wt. |
|-----------|----------------------|------------------------------------|-----------|--------|------|-----|
| 32-378 | RMRC-15 W/RTR | Non-Locking R&C, W/Rec. Touch Read | 15 | N/A | 11.5 | 29 |
| 32-379 | RMRC-15 W/2RTR | Non-Locking R&C, W/Rec. Touch Read | 15 | N/A | 11.5 | 29 |
| 32-380 | RMRC-15L W/SN W/RTR | Locking R&C, W/Rec. Touch Read | 15 | 27/32 | 11.5 | 30 |
| 32-381 | RMRC-15L W/LN W/RTR | Locking R&C, W/Rec. Touch Read | 15 | 1-1/32 | 11.5 | 30 |
| 32-384 | RMRC-15L W/SN W/2RTR | Locking R&C, W/Rec. Touch Read | 15 | 27/32 | 11.5 | 30 |
| 32-385 | RMRC-15L W/LN W/2RTR | Locking R&C, W/Rec. Touch Read | 15 | 1-1/32 | 11.5 | 30 |

| Part Code | Model # | Description | Tile Size | Bolt | Lid | Wt. |
|-----------|----------------------|------------------------------------|-----------|--------|------|-----|
| 32-387 | RMRC-18 W/RTR | Non-Locking R&C, W/Rec. Touch Read | 18 | N/A | 11.5 | 41 |
| 32-388 | RMRC-18 W/2RTR | Non-Locking R&C, W/Rec. Touch Read | 18 | N/A | 11.5 | 41 |
| 32-389 | RMRC-18L W/SN W/RTR | Locking R&C, W/Rec. Touch Read | 18 | 27/32 | 11.5 | 42 |
| 32-390 | RMRC-18L W/LN W/RTR | Locking R&C, W/Rec. Touch Read | 18 | 1-1/32 | 11.5 | 42 |
| 32-393 | RMRC-18L W/SN W/2RTR | Locking R&C, W/Rec. Touch Read | 18 | 27/32 | 11.5 | 42 |
| 32-394 | RMRC-18L W/LN W/2RTR | Locking R&C, W/Rec. Touch Read | 18 | 1-1/32 | 11.5 | 42 |

| Part Code | Model # | Description | Tile Size | Bolt | Lid | Wt. |
|-----------|----------------------|------------------------------------|-----------|--------|------|-----|
| 32-422 | RMRC-20 W/RTR | Non-Locking R&C, W/Rec. Touch Read | 20 | N/A | 11.5 | 45 |
| 32-423 | RMRC-20 W/2RTR | Non-Locking R&C, W/Rec. Touch Read | 20 | N/A | 11.5 | 45 |
| 32-424 | RMRC-20L W/SN W/RTR | Locking R&C, W/Rec. Touch Read | 20 | 27/32 | 11.5 | 46 |
| 32-425 | RMRC-20L W/LN W/RTR | Locking R&C, W/Rec. Touch Read | 20 | 1-1/32 | 11.5 | 46 |
| 32-428 | RMRC-20L W/SN W/2RTR | Locking R&C, W/Rec. Touch Read | 20 | 27/32 | 11.5 | 46 |
| 32-429 | RMRC-20L W/LN W/2RTR | Locking R&C, W/Rec. Touch Read | 20 | 1-1/32 | 11.5 | 46 |

| Part Code | Model # | Description | Tile Size | Bolt | Lid | Wt. |
|-----------|----------------------|------------------------------------|-----------|--------|------|-----|
| 32-432 | RMRC-21 W/RTR | Non-Locking R&C, W/Rec. Touch Read | 21 | N/A | 11.5 | 57 |
| 32-433 | RMRC-21 W/2RTR | Non-Locking R&C, W/Rec. Touch Read | 21 | N/A | 11.5 | 57 |
| 32-434 | RMRC-21L W/SN W/RTR | Locking R&C, W/Rec. Touch Read | 21 | 27/32 | 11.5 | 58 |
| 32-435 | RMRC-21L W/LN W/RTR | Locking R&C, W/Rec. Touch Read | 21 | 1-1/32 | 11.5 | 58 |
| 32-438 | RMRC-21L W/SN W/2RTR | Locking R&C, W/Rec. Touch Read | 21 | 27/32 | 11.5 | 58 |
| 32-439 | RMRC-21L W/LN W/2RTR | Locking R&C, W/Rec. Touch Read | 21 | 1-1/32 | 11.5 | 58 |



NON-RECESSED CAST IRON METER BOX RINGS & COVERS W/7" RECESSED TOUCH READ

| Part Code | Model # | Description | Tile Size | Bolt | Lid | Wt. |
|-----------|--------------------|-------------------------------|-----------|--------|------|-----|
| 32-303 | RMCI-15 W/TR | Non Locking R&C w/Recessed TR | 15 | N/A | 11.5 | 31 |
| 32-304 | RMCI-15L W/SN W/TR | Locking R&C W/Recessed TR | 15 | 27/32 | 11.5 | 32 |
| 32-305 | RMCI-15L W/LN W/TR | Locking R&C W/Recessed TR | 15 | 1-1/32 | 11.5 | 32 |

| Part Code | Model # | Description | Tile Size | Bolt | Lid | Wt. |
|-----------|--------------------|-------------------------------|-----------|--------|------|-----|
| 32-306 | RMCI-18 W/TR | Non Locking R&C w/Recessed TR | 18 | N/A | 11.5 | 33 |
| 32-307 | RMCI-18L W/SN W/TR | Locking R&C W/Recessed TR | 18 | 27/32 | 11.5 | 33 |
| 32-308 | RMCI-18L W/LN W/TR | Locking R&C W/Recessed TR | 18 | 1-1/32 | 11.5 | 33 |

| Part Code | Model # | Description | Tile Size | Bolt | Lid | Wt. |
|-----------|--------------------|-------------------------------|-----------|--------|------|-----|
| 32-309 | RMCI-20 W/TR | Non Locking R&C w/Recessed TR | 20 | N/A | 11.5 | 36 |
| 32-310 | RMCI-20L W/SN W/TR | Locking R&C W/Recessed TR | 20 | 27/32 | 11.5 | 37 |
| 32-311 | RMCI-20L W/LN W/TR | Locking R&C W/Recessed TR | 20 | 1-1/32 | 11.5 | 37 |

| Part Code | Model # | Description | Tile Size | Bolt | Lid | Wt. |
|-----------|--------------------|-------------------------------|-----------|--------|------|-----|
| 32-312 | RMCI-21 W/TR | Non Locking R&C w/Recessed TR | 21 | N/A | 11.5 | 42 |
| 32-313 | RMCI-21L W/SN W/TR | Locking R&C W/Recessed TR | 21 | 27/32 | 11.5 | 43 |
| 32-314 | RMCI-21L W/LN W/TR | Locking R&C W/Recessed TR | 21 | 1-1/32 | 11.5 | 43 |

RECESSED CAST IRON METER BOX RINGS & COVERS W/7" RECESSED TOUCH READ

| Part Code | Model # | Description | Tile Size | Bolt | Lid | Wt. |
|-----------|---------------------|-------------------------------|-----------|--------|------|-----|
| 32-315 | RMRCI-15 W/TR | Non Locking R&C w/Recessed TR | 15 | N/A | 11.5 | 37 |
| 32-316 | RMRCI-15L W/SN W/TR | Locking R&C W/Recessed TR | 15 | 27/32 | 11.5 | 38 |
| 32-317 | RMRCI-15L W/LN W/TR | Locking R&C W/Recessed TR | 15 | 1-1/32 | 11.5 | 38 |

| Part Code | Model # | Description | Tile Size | Bolt | Lid | Wt. |
|-----------|---------------------|-------------------------------|-----------|--------|------|-----|
| 32-318 | RMRCI-18 W/TR | Non Locking R&C w/Recessed TR | 18 | N/A | 11.5 | 41 |
| 32-319 | RMRCI-18L W/SN W/TR | Locking R&C W/Recessed TR | 18 | 27/32 | 11.5 | 42 |
| 32-320 | RMRCI-18L W/LN W/TR | Locking R&C W/Recessed TR | 18 | 1-1/32 | 11.5 | 42 |

| Part Code | Model # | Description | Tile Size | Bolt | Lid | Wt. |
|-----------|---------------------|-------------------------------|-----------|--------|------|-----|
| 32-321 | RMRCI-20 W/TR | Non Locking R&C w/Recessed TR | 20 | N/A | 11.5 | 43 |
| 32-322 | RMRCI-20L W/SN W/TR | Locking R&C W/Recessed TR | 20 | 27/32 | 11.5 | 44 |
| 32-323 | RMRCI-20L W/LN W/TR | Locking R&C W/Recessed TR | 20 | 1-1/32 | 11.5 | 44 |

| Part Code | Model # | Description | Tile Size | Bolt | Lid | Wt. |
|-----------|---------------------|-------------------------------|-----------|--------|------|-----|
| 32-324 | RMRCI-21 W/TR | Non Locking R&C w/Recessed TR | 21 | N/A | 11.5 | 57 |
| 32-325 | RMRCI-21L W/SN W/TR | Locking R&C W/Recessed TR | 21 | 27/32 | 11.5 | 58 |
| 32-326 | RMRCI-21L W/LN W/TR | Locking R&C W/Recessed TR | 21 | 1-1/32 | 11.5 | 58 |

VESTAL MANUFACTURING
Sweetwater, TN 37874
800-456-9562



DOUBLE FROST PROTECTION RINGS & COVERS W/ FROST PAN

| Part Code | Model # | Description | Box Size | Bolt | Lid | Wt. |
|-----------|-----------------------------|---------------------------------------|----------|--------|------|-----|
| 32-750 | W-18P-L R&C w/SN | Locking Ring & Cover w/pan | 18 | 27/32 | 11.5 | 58 |
| 32-751 | W-18P-L R&C w/LN | Locking Ring & Cover w/pan | 18 | 1-1/32 | 11.5 | 58 |
| 32-752 | W-18P-L R&C w/SN w/TR | Locking Ring & Cover w/pan w/TR | 18 | 27/32 | 11.5 | 58 |
| 32-753 | W-18P-L R&C w/LN w/TR | Locking Ring & Cover w/pan w/TR | 18 | 1-1/32 | 11.5 | 58 |
| 32-754 | W-18P-L R&C w/SN w/2TR | Locking Ring & Cover w/pan w/2TR | 18 | 27/32 | 11.5 | 58 |
| 32-755 | W-18P-L R&C w/LN w/2TR | Locking Ring & Cover w/pan w/2TR | 18 | 1-1/32 | 11.5 | 58 |
| 32-756 | W-18P-L R&C w/SN w/RTR | Locking Ring & Cover w/pan w/Rec TR | 18 | 27/32 | 11.5 | 58 |
| 32-757 | W-18P-L R&C W/LN W/RTR | Locking Ring & Cover w/pan w/Rec TR | 18 | 1-1/32 | 11.5 | 58 |
| 32-758 | W-18P-L R&C W/SN W/2RTR | Locking Ring & Cover w/pan w/Rec 2TR | 18 | 27/32 | 11.5 | 58 |
| 32-759 | W-18P-L R&C W/LN W/2RTR | Locking Ring & Cover w/pan w/Rec 2TR | 18 | 1-1/32 | 11.5 | 58 |
| 32-760 | W-18P-L R&C W/SN W/ITRON TR | Locking Ring & Cover w/pan w/ltron TR | 18 | 27/32 | 11.5 | 58 |
| 32-761 | W-18P-L R&C W/LN W/ITRON TR | Locking Ring & Cover w/pan w/ltron TR | 18 | 1-1/32 | 11.5 | 58 |

| | | | | | | |
|--------|-----------------------------|---------------------------------------|----|--------|------|----|
| 32-762 | W-20P-L R&C W/SN | Locking Ring & Cover w/pan | 20 | 27/32 | 11.5 | 62 |
| 32-763 | W-20P-L R&C W/LN | Locking Ring & Cover w/pan | 20 | 1-1/32 | 11.5 | 62 |
| 32-764 | W-20P-L R&C W/SN W/TR | Locking Ring & Cover w/pan w/TR | 20 | 27/32 | 11.5 | 62 |
| 32-765 | W-20P-L R&C W/LN W/TR | Locking Ring & Cover w/pan w/TR | 20 | 1-1/32 | 11.5 | 62 |
| 32-766 | W-20P-L R&C W/SN W/2TR | Locking Ring & Cover w/pan w/2TR | 20 | 27/32 | 11.5 | 62 |
| 32-767 | W-20P-L R&C W/LN W/2TR | Locking Ring & Cover w/pan w/2TR | 20 | 1-1/32 | 11.5 | 62 |
| 32-768 | W-20P-L R&C W/SN W/RTR | Locking Ring & Cover w/pan w/Rec TR | 20 | 27/32 | 11.5 | 62 |
| 32-769 | W-20P-L R&C W/LN W/RTR | Locking Ring & Cover w/pan w/Rec TR | 20 | 1-1/32 | 11.5 | 62 |
| 32-770 | W-20P-L R&C W/SN W/2RTR | Locking Ring & Cover w/pan w/Rec 2TR | 20 | 27/32 | 11.5 | 62 |
| 32-771 | W-20P-L R&C W/LN W/2RTR | Locking Ring & Cover w/pan w/Rec 2TR | 20 | 1-1/32 | 11.5 | 62 |
| 32-772 | W-20P-L R&C W/SN W/ITRON TR | Locking Ring & Cover w/pan w/ltron TR | 20 | 27/32 | 11.5 | 62 |
| 32-773 | W-20P-L R&C W/LN W/ITRON TR | Locking Ring & Cover w/pan w/ltron TR | 20 | 1-1/32 | 11.5 | 62 |



| Part Code | Model # | Description | Box Size | Lid | Wt. |
|-----------|----------------|------------------|----------|------|-----|
| 32-775 | W-18 Ring only | Double Ring only | 18 | 11.5 | 45 |
| 32-776 | W-20 Ring only | Double Ring only | 20 | 11.5 | 50 |



| Part Code | Model # | Description | Lid | Wt. |
|-----------|--------------------|-----------------------|-----|-----|
| 32-777 | W-1 Inner Pan only | Frost Pan for W-Rings | N/A | 1 |

VESTAL MANUFACTURING
Sweetwater, TN 37874
800-456-9562



RECESSED CAST IRON METER BOX RINGS & COVERS - BALTIMORE LID - SPIKED RING

| Part Code | Model # | Description | Tile Size | Bolt | Lid | Wt. |
|-----------|------------------------------|--|-----------|--------|-----|-----|
| 32-408 | BRMRC-18 SPIKED | Non-Locking R&C SPIKED | 18 | N/A | 12 | 39 |
| 32-409 | BRMRC-18 SPIKED W/TR | Non-Locking R&C SPIKED w/ Touch Read | 18 | N/A | 12 | 39 |
| 32-410 | BRMRC-18 SPIKED W/2TR | Non-Locking R&C SPIKED w/ Touch Read | 18 | N/A | 12 | 39 |
| 32-411 | BRMRC-18 SPIKED W/RTR | Non-Locking R&C SPIKED w/ Rec. Touch Read | 18 | N/A | 12 | 41 |
| 32-412 | BRMRC-18 SPIKED W/2RTR | Non-Locking R&C SPIKED w/ 2 Rec.Touch Read | 18 | N/A | 12 | 41 |
| 32-482 | BRMRC-18L SPIKED W/SN | Locking R&C SPIKED | 18 | 27/32 | 12 | 41 |
| 32-483 | BRMRC-18L SPIKED W/LN | Locking R&C SPIKED | 18 | 1-1/32 | 12 | 41 |
| 32-413 | BRMRC-18L SPIKED W/SN W/TR | Locking R&C SPIKED w/ Touch Read | 18 | 27/32 | 12 | 42 |
| 32-414 | BRMRC-18L SPIKED W/LN W/TR | Locking R&C SPIKED w/ Touch Read | 18 | 1-1/32 | 12 | 42 |
| 32-415 | BRMRC-18L SPIKED W/SN W/RTR | Locking R&C SPIKED w/ Rec. Touch Read | 18 | 27/32 | 12 | 42 |
| 32-416 | BRMRC-18L SPIKED W/LN W/RTR | Locking R&C SPIKED w/ Rec. Touch Read | 18 | 1-1/32 | 12 | 42 |
| 32-417 | BRMRC-18L SPIKED W/SN W/2TR | Locking R&C SPIKED w/ 2 Touch Read | 18 | 27/32 | 12 | 39 |
| 32-418 | BRMRC-18L SPIKED W/LN W/2TR | Locking R&C SPIKED w/ 2 Touch Read | 18 | 1-1/32 | 12 | 39 |
| 32-419 | BRMRC-18L SPIKED W/SN W/2RTR | Locking R&C SPIKED w/ 2 Rec. Touch Read | 18 | 27/32 | 12 | 42 |
| 32-420 | BRMRC-18L SPIKED W/LN W/2RTR | Locking R&C SPIKED w/ 2 Rec. Touch Read | 18 | 1-1/32 | 12 | 42 |

RECESSED CAST IRON METER BOX RINGS & COVERS - BALTIMORE LID - SPIKED RING

| Part Code | Model # | Description | Tile Size | Bolt | Lid | Wt. |
|-----------|------------------------------|---|-----------|--------|-----|-----|
| 32-712 | BRMRC-20 SPIKED | Non-Locking R&C SPIKED | 20 | N/A | 12 | 39 |
| 32-713 | BRMRC-20 SPIKED W/TR | Non-Locking R&C SPIKED w/ Touch Read | 20 | N/A | 12 | 39 |
| 32-714 | BRMRC-20L SPIKED W/SN | Locking R&C SPIKED | 20 | 27/31 | 12 | 41 |
| 32-715 | BRMRC-20L SPIKED W/LN | Locking R&C SPIKED | 20 | 1-1/32 | 12 | 41 |
| 32-716 | BRMRC-20L SPIKED W/SN W/TR | Locking R&C SPIKED w/ Touch Read | 20 | 27/31 | 12 | 42 |
| 32-717 | BRMRC-20L SPIKED W/LN W/TR | Locking R&C SPIKED w/ Touch Read | 20 | 1-1/32 | 12 | 42 |
| 32-718 | BRMRC-20L SPIKED W/SN W/RTR | Locking R&C SPIKED w/ Rec. Touch Read | 20 | 27/32 | 12 | 42 |
| 32-719 | BRMRC-20L SPIKED W/LN W/RTR | Locking R&C SPIKED w/ Touch Read | 20 | 1-1/32 | 12 | 42 |
| 32-720 | BRMRC-20L SPIKED W/SN W/2RTR | Locking R&C SPIKED w/ 2 Rec. Touch Read | 20 | 27/32 | 12 | 42 |
| 32-721 | BRMRC-20L SPIKED W/LN W/2RTR | Locking R&C SPIKED w/ 2 Rec. Touch Read | 20 | 1-1/32 | 12 | 42 |



RECESSED CAST IRON METER BOX RINGS & COVERS - BALTIMORE - NO SPIKES

| Part Code | Model # | Description | Tile Size | Bolt | Lid | Wt. |
|-----------|-----------------------|-------------------------------------|-----------|--------|-----|-----|
| 32-395 | BRMRC-18 | Non-Locking R&C | 18 | N/A | 12 | 39 |
| 32-396 | BRMRC-18 W/TR | Non-Locking R&C w/ Touch Read | 18 | N/A | 12 | 39 |
| 32-397 | BRMRC-18 W/2TR | Non-Locking R&C w/ Touch Read | 18 | N/A | 12 | 39 |
| 32-398 | BRMRC-18 W/RTR | Non-Locking R&C w/ Rec. Touch Read | 18 | N/A | 12 | 41 |
| 32-399 | BRMRC-18 W/2RTR | Non-Locking R&C w/ 2 Rec.Touch Read | 18 | N/A | 12 | 41 |
| 32-480 | BRMRC-18L W/SN | Locking R&C | 18 | 27/32 | 12 | 41 |
| 32-481 | BRMRC-18L W/LN | Locking R&C | 18 | 1-1/32 | 12 | 41 |
| 32-400 | BRMRC-18L W/SN W/TR | Locking R&C w/ Touch Read | 18 | 27/32 | 12 | 42 |
| 32-401 | BRMRC-18L W/LN W/TR | Locking R&C w/ Touch Read | 18 | 1-1/32 | 12 | 42 |
| 32-402 | BRMRC-18L W/SN W/RTR | Locking R&C w/ Rec. Touch Read | 18 | 27/32 | 12 | 42 |
| 32-403 | BRMRC-18L W/LN W/RTR | Locking R&C w/ Rec. Touch Read | 18 | 1-1/32 | 12 | 42 |
| 32-404 | BRMRC-18L W/SN W/2TR | Locking R&C w/ 2 Touch Read | 18 | 27/32 | 12 | 39 |
| 32-405 | BRMRC-18L W/LN W/2TR | Locking R&C w/ 2 Touch Read | 18 | 1-1/32 | 12 | 39 |
| 32-406 | BRMRC-18L W/SN W/2RTR | Locking R&C w/ 2 Rec. Touch Read | 18 | 27/32 | 12 | 42 |
| 32-407 | BRMRC-18L W/LN W/2RTR | Locking R&C w/ 2 Rec. Touch Read | 18 | 1-1/32 | 12 | 42 |

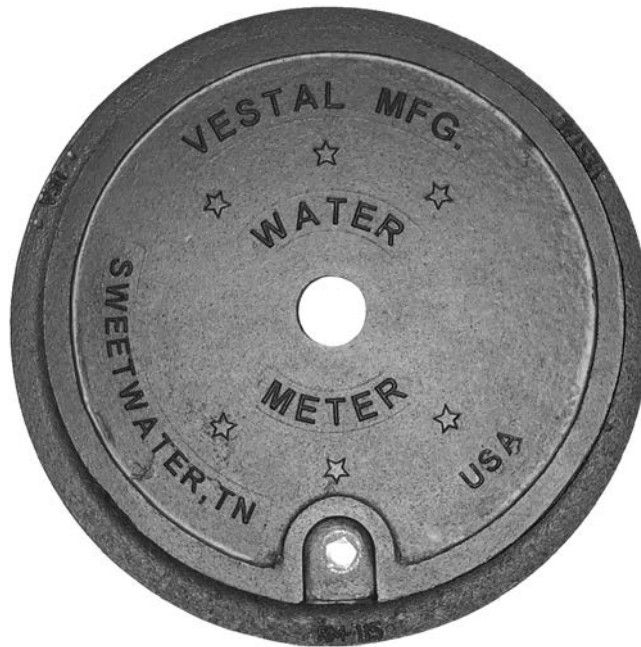
RECESSED CAST IRON METER BOX RINGS & COVERS - BALTIMORE - NO SPIKES

| Part Code | Model # | Description | Tile Size | Bolt | Lid | Wt. |
|-----------|-------------------------|----------------------------------|-----------|--------|-----|-----|
| 32-702 | BRMRC-20 | Non-Locking R&C | 20 | N/A | 12 | 39 |
| 32-703 | BRMRC-20 W/TR | Non-Locking R&C w/ Touch Read | 20 | N/A | 12 | 39 |
| 32-704 | BRMRC-20L W/SN | Locking R&C | 20 | 27/31 | 12 | 41 |
| 32-705 | BRMRC-20L W/LN | Locking R&C | 20 | 1-1/32 | 12 | 41 |
| 32-706 | BRMRC-20L W/SN W/TR | Locking R&C w/ Touch Read | 20 | 27/31 | 12 | 42 |
| 32-707 | BRMRC-20L W/LN W/TR | Locking R&C w/ Touch Read | 20 | 1-1/32 | 12 | 42 |
| 32-708 | BRMRC-20L W/SN W/RTR | Locking R&C w/ Rec. Touch Read | 20 | 27/32 | 12 | 42 |
| 32-709 | BRMRC-20L W/LN W/RTR | Locking R&C w/ Touch Read | 20 | 1-1/32 | 12 | 42 |
| 32-710 | BRMRC-20L D W/SN W/2RTR | Locking R&C w/ 2 Rec. Touch Read | 20 | 27/32 | 12 | 42 |
| 32-711 | BRMRC-20L W/LN W/2RTR | Locking R&C w/ 2 Rec. Touch Read | 20 | 1-1/32 | 12 | 42 |



NON-RECESSED RINGS & COVERS - HEAVY RING WITHOUT HINGE

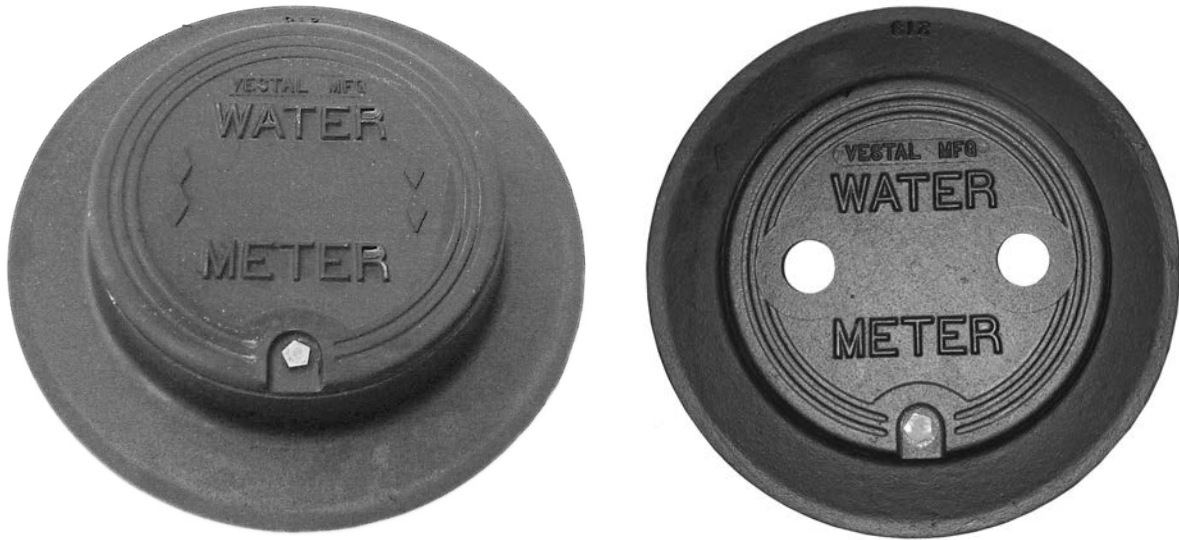
| Part Code | Model # | Description | Tile Size | Bolt | Lid | Wt. |
|-----------|----------------------|---|-----------|--------|------|-----|
| 32-485 | LWC-20L W/SN | Locking R&C- No Hook | 20 | 27/32 | 11.5 | 46 |
| 32-089 | LWC-20L W/LN | Locking R&C- No Hook | 20 | 1-1/32 | 11.5 | 46 |
| 32-484 | LWC-20L W/SN W/ TR | Locking R&C- Touch Read- No Hook | 20 | 27/32 | 11.5 | 46 |
| 32-486 | LWC-20L W/LN W/ TR | Locking R&C- Touch Read- No Hook | 20 | 1-1/32 | 11.5 | 46 |
| 32-487 | LWC-20L W/SN W/ RTR | Locking R&C- Recessed Touch Read- No Hook | 20 | 27/32 | 11.5 | 46 |
| 32-489 | LWC-20L W/LN W/ RTR | Locking R&C- Recessed Touch Read- No Hook | 20 | 1-1/32 | 11.5 | 46 |
| 32-488 | LWC-20L W/SN W/ 2RTR | Locking R&C- 2 Recessed Touch Read- No Hook | 20 | 27/32 | 11.5 | 46 |
| 32-490 | LWC-20L W/LN W/ 2RTR | Locking R&C- 2 Recessed Touch Read- No Hook | 20 | 1-1/32 | 11.5 | 46 |



NON-RECESSED CAST IRON METER BOX RINGS & COVERS

| Vestal No. | Model # | Description | Tile Size | Bolt | Lid | Wt. |
|------------|----------------------|-----------------------------|-----------|-------|-----|-----|
| 32-057 | RMC-115-L w/SN | Locking R&C | 18 | 27/32 | 15 | 38 |
| 32-257 | RMC-115-L w/SN w/TR | Locking R&C, Touch Read | 18 | 27/32 | 15 | 38 |
| 32-258 | RMC-115-L w/SN w/2TR | Locking R&C, w/2 Touch Read | 18 | 27/32 | 15 | 38 |

VESTAL MANUFACTURING
Sweetwater, TN 37874
800-456-9562



NON-RECESSED CAST IRON METER BOX RINGS & COVERS

| Part Code | Model # | Description | Tile Size | Bolt | Lid | Wt. |
|-----------|---------------------------|-----------------------------|-----------|--------|-----|-----|
| 32-082 | RMC-213L R&C W/LN | Locking R&C | 20 | 1-1/32 | 13 | 47 |
| 32-083 | RMC-213L R&C W/SN | Locking R&C | 20 | 27/32 | 13 | 47 |
| 32-282 | RMC-213L R&C W/LN & W/TR | Locking R&C, Touch Read | 20 | 1-1/32 | 13 | 47 |
| 32-283 | RMC-213L R&C W/SN & W/TR | Locking R&C, Touch Read | 20 | 27/32 | 13 | 47 |
| 32-284 | RMC-213L R&C W/LN & W/2TR | Locking R&C, w/2 Touch Read | 20 | 1-1/32 | 13 | 47 |
| 32-285 | RMC-213L R&C W/SN & W/2TR | Locking R&C, w/2 Touch Read | 20 | 27/32 | 13 | 47 |

*RMC-213 series rings & covers feature special designed hinge to support lid when open.



RECESSED CAST IRON METER BOX RINGS & COVERS

| Part Code | Model # | Description | Tile Size | Bolt | Lid | Wt. |
|-----------|---------------------------|---------------------------------|-----------|--------|-----|-----|
| 32-072 | RMRC-215L R&C W/SN | Locking R&C | 20 | 27/32 | 15 | 50 |
| 32-073 | RMRC-215L R&C W/LN | Locking R&C | 20 | 1-1/32 | 15 | 50 |
| 32-272 | RMRC-215L R&C W/SN W/TR | Locking R&C, Touch Read | 20 | 27/32 | 15 | 50 |
| 32-273 | RMRC-215L R&C W/LN W/TR | Locking R&C, Touch Read | 20 | 1-1/32 | 15 | 50 |
| 32-107 | RMRC-215L R&C W/SN W/2TR | Locking R&C, 2 Touch Read | 20 | 27/32 | 15 | 50 |
| 32-108 | RMRC-215L R&C W/LN W/2TR | Locking R&C, 2 Touch Read | 20 | 1-1/32 | 15 | 50 |
| 32-277 | RMRC-215L R&C W/SN W/RTR | Locking R&C, w/ Rec. Touch Read | 20 | 27/32 | 15 | 52 |
| 32-287 | RMRC-215L R&C W/LN W/RTR | Locking R&C, w/ Rec. Touch Read | 20 | 1-1/32 | 15 | 52 |
| 32-278 | RMRC-215L R&C W/SN W/2RTR | Locking R&C w/2 Rec. Touch Read | 20 | 27/32 | 15 | 56 |
| 32-288 | RMRC-215L R&C W/LN W/2RTR | Locking R&C w/2 Rec. Touch Read | 20 | 1-1/32 | 15 | 56 |



HOOK COVER NON-RECESSED CAST IRON METER BOX RINGS & COVERS

| Part Code | Model # | Description | Tile Size | Bolt | Lid | Wt. |
|-----------|--------------|----------------------------------|-----------|------|------|-----|
| 32-102 | RMC-15H | Non-Locking Drop-In | 15 | N/A | 11.5 | 27 |
| 32-024 | RMC-18H | Non-Locking Drop-In | 18 | N/A | 11.5 | 30 |
| 32-224 | RMC-18H W/TR | Non-Locking Drop-In w/Touch Read | 18 | N/A | 11.5 | 30 |
| 32-027 | RMC-20H | Non-Locking Drop-In | 20 | N/A | 11.5 | 47 |
| 32-227 | RMC-20H W/TR | Non-Locking Drop-In w/Touch Read | 20 | N/A | 11.5 | 47 |



CAST IRON ELEVATOR RINGS

| Vestal No. | Model # | Description | Type | Bolt | Lid | Wt. |
|------------|---------|----------------------|--------------|-----------|--------|-----|
| 96-146 | ELR-15 | 1-1/2" Elevator Ring | Non-Recessed | J-Bolt | 12 | 8 |
| 96-147 | ELR-3 | 3" Elevator Ring | Non-Recessed | J-Bolt | 12 | 10 |
| 96-186 | ELR-25 | 2-1/2" Elevator Ring | Recessed | Set Screw | 11-1/2 | 10 |
| 96-187 | ELR-4 | 4" Elevator Ring | Recessed | Set Screw | 11-1/2 | 16 |



CAST IRON TOUCH READ PLUG

| Part Code | Model # | Description | Size | Bolt | Lid | Wt. |
|-----------|-------------------------|---------------------------|-------|------|-----|-----|
| 32-074 | TR Plug with Cotter Pin | Plug for Touch Read Holes | 1 3/4 | N/A | Any | 2 |



CAST IRON METER BOX RINGS

| Part Code | Model # | Description | Tile Size | Lid | Wt. |
|-----------|-----------|------------------|-----------|------|-----|
| 32-034 | RM-15 | 17" (OD) Ring | 15 | 11.5 | 16 |
| 32-028 | RM-18 | 20" (OD) Ring | 18 | 11.5 | 19 |
| 32-028X | RM-18 "X" | 20" (OD) Ring | 18 | 11.5 | 19 |
| 32-163 | RM-115 | 20" (OD) Ring | 18 | 15 | 19 |
| 32-029 | RM-20 | 21.75" (OD) Ring | 20 | 11.5 | 22 |
| 32-087 | LW-20 | 21.75" (OD) Ring | 20 | 11.5 | 28 |
| 32-053 | RM-213 | 22.5" (OD) Ring | 20 | 13 | 22 |
| 32-092 | RM-21 | 24" (OD) Ring | 21 | 11.5 | 28 |



CAST IRON METER BOX RINGS - RECESSED

| Part Code | Model # | Description | Tile Size | Lid | Wt. |
|-----------|---------------------|-------------------|-----------|------|-----|
| 32-039 | RMR-15 | 17" (OD) Ring | 15 | 11.5 | 18 |
| 32-042 | RMR-18 | 20" (OD) Ring | 18 | 11.5 | 18 |
| 32-084 | RMR-18 Spiked Ring | 20" (OD) Ring | 18 | 11.5 | 28 |
| 32-058 | RMR-20 | 21-5/8" (OD) Ring | 20 | 11.5 | 28 |
| 32-700 | BRMR-20 | 21-5/8" (OD) Ring | 20 | 12 | 31 |
| 32-701 | BRMR-20 Spiked Ring | 21-5/8" (OD) Ring | 20 | 12 | 33 |
| 32-115 | RMR-215 | 21-5/8" (OD) Ring | 20 | 15 | 30 |
| 32-096 | RMR-21 | 24" (OD) Ring | 21 | 11.5 | 33 |



FLAT CAST IRON METER RING - RECESSED

| Part Code | Model # | Description | Tile Size | Lid | Wt. |
|-----------|---------|-----------------|-----------|------|-----|
| 32-103 | FRMR-18 | 20.5" (OD) Ring | 18 | 11.5 | 28 |

NON RECESSED CAST IRON METER BOX COVERS ONLY

RMCL



RMCL W/TR



RMCL W/2TR



RMCL W/RTR



RMCL W/2RTR



RMCI W/TR



RMCL EX-HVY



RMCL EX-HVY W/TR



RMCL EX-HVY W/2TR



RMCL 213



RMCL 213 W/TR



RMC 213 W/2TR



RMCH



RM 115 W/TR



NON RECESSED CAST IRON METER BOX COVERS ONLY

| Part Code | Model # | Description | Bolt | Lid | Wt. |
|-----------|------------------------|---|--------|------|-----|
| 32-030 | RMC | Non-Locking Cover | N/A | 11.5 | 11 |
| 32-031 | RMCL W/SN | Locking Cover | 27/32 | 11.5 | 11 |
| 32-063 | RMCL W/LN | Locking Cover | 1-1/32 | 11.5 | 11 |
| 32-230 | RMC W/TR | Non Locking Cover, Touch Read | N/A | 11.5 | 11 |
| 32-231 | RMCL W/SN W/TR | Locking Cover, Touch Read | 27/32 | 11.5 | 11 |
| 32-263 | RMCL W/LN W/TR | Locking Cover, Touch Read | 1-1/32 | 11.5 | 11 |
| 32-440 | RMC W/2TR | Non-Locking Cover w/ Touch Read | N/A | 11.5 | 11 |
| 32-445 | RMCL W/SN W/2TR | Locking Cover w/ Touch Read | 27/32 | 11.5 | 12 |
| 32-446 | RMCL W/LN W/2TR | Locking Cover w/ Touch Read | 1-1/32 | 11.5 | 12 |
| 32-441 | RMC W/RTR | Non-Locking Cover w/Rec Touch Read | N/A | 11.5 | 12 |
| 32-442 | RMC W/2RTR | Non-Locking Cover w/Rec 2 Touch Read | N/A | 11.5 | 12 |
| 32-443 | RMCL W/SN W/RTR | Locking Cover w/Rec Touch Read | 27/32 | 11.5 | 12 |
| 32-444 | RMCL W/LN W/RTR | Locking Cover w/Rec Touch Read | 1-1/32 | 11.5 | 12 |
| 32-447 | RMCL W/SN W/2RTR | Locking Cover w/Rec 2 Touch Read | 27/32 | 11.5 | 12 |
| 32-448 | RMCL W/LN W/2RTR | Locking Cover w/Rec 2 Touch Read | 1-1/32 | 11.5 | 12 |
| 32-300 | RMCI W/TR | Non-Locking Cover w/Itron TR | N/A | 11.5 | 14 |
| 32-301 | RMCI W/SN W/TR | Locking Cover w/Itron TR | 27/32 | 11.5 | 15 |
| 32-302 | RMCI W/LN W/TR | Locking Cover w/Itron TR | 1-1/32 | 11.5 | 15 |
| 32-080 | RMCL EX-HVY W/SN | Extra Heavy Locking Cover | 27/32 | 11.5 | 26 |
| 32-081 | RMCL EX-HVY W/LN | Extra Heavy Locking Cover | 1-1/32 | 11.5 | 26 |
| 32-280 | RMCL EX-HVY W/SN W/TR | Extra Heavy Locking Cover, Touch Read | 27/32 | 11.5 | 26 |
| 32-281 | RMCL EX-HVY W/LN W/TR | Extra Heavy Locking Cover, Touch Read | 1-1/32 | 11.5 | 26 |
| 32-105 | RMCL EX-HVY W/SN W/2TR | Extra Heavy Locking Cover, 2 Touch Read | 27/32 | 11.5 | 26 |
| 32-106 | RMCL EX-HVY W/LN W/2TR | Extra Heavy Locking Cover, 2 Touch Read | 1-1/32 | 11.5 | 26 |
| 32-044 | RMCL 213 W/LN | Locking Cover | 27/32 | 13 | 21 |
| 32-045 | RMCL 213 W/SN | Locking Cover | 1-1/32 | 13 | 21 |
| 32-244 | RMCL 213 W/LN W/TR | Locking Cover, Touch Read | 1-1/32 | 13 | 21 |
| 32-245 | RMCL 213 W/SN W/TR | Locking Cover, Touch Read | 27/32 | 13 | 21 |
| 32-242 | RMCL 213 W/LN W/2TR | Locking Cover, 2 Touch Read | 1-1/32 | 13 | 21 |
| 32-243 | RMCL 213 W/SN W/2TR | Locking Cover, 2 Touch Read | 27/32 | 13 | 21 |
| 32-160 | RMCL 115 W/SN | Locking Cover | 27/32 | 15 | 18 |
| 32-161 | RMCL 115 W/SN W/TR | Locking Cover, Touch Read | 27/32 | 15 | 18 |
| 32-162 | RMCL 115 W/SN W/2TR | Locking Cover, 2 Touch Read | 27/32 | 15 | 18 |
| 32-032 | RMCH | Hook Non-Locking Cover | N/A | 11.5 | 9 |
| 32-232 | RMCH W/TR | Hook Non-Locking Cover w/TR | N/A | 11.5 | 9 |

RECESSED CAST IRON METER BOX COVERS ONLY

RMRCCL



RMRCCL W/TR



RMRCCL W/2TR



RMRCCL W/RTR



RMRCCL W/2RTR



BRMRCL



RMRC 215



RMRC 215 W/TR



RMRC 215 W/2TR



RMR 215 COVER W/RTR



RMR 215 COVER W/2RTR



VESTAL MANUFACTURING
Sweetwater, TN 37874
800-456-9562

RECESSED CAST IRON METER BOX COVERS ONLY

| Part Code | Model # | Description | Bolt | Lid | Wt. |
|-----------|--------------------------------|--------------------------------------|--------|------|-----|
| 32-449 | RMRC | Non-Locking Cover | N/A | 11.5 | 11 |
| 32-452 | RMRCL W/SN | Locking Cover | 27/32 | 11.5 | 11 |
| 32-453 | RMRCL W/LN | Locking Cover | 1-1/32 | 11.5 | 11 |
| 32-450 | RMC W/TR | Non Locking Cover, Touch Read | N/A | 11.5 | 11 |
| 32-454 | RMRCL W/SN W/TR | Locking Cover, Touch Read | 27/32 | 11.5 | 11 |
| 32-455 | RMRCL W/LN W/TR | Locking Cover, Touch Read | 1-1/32 | 11.5 | 11 |
| 32-451 | RMRC W/2TR | Non-Locking Cover w/ Touch Read | N/A | 11.5 | 12 |
| 32-456 | RMRCL W/SN W/2TR | Locking Cover w/ Touch Read | 27/32 | 11.5 | 12 |
| 32-457 | RMRCL W/LN W/2TR | Locking Cover w/ Touch Read | 1-1/32 | 11.5 | 12 |
| 32-458 | RMRC W/RTR | Non-Locking Cover w/Rec Touch Read | N/A | 11.5 | 12 |
| 32-459 | RMRC W/2RTR | Non-Locking Cover w/Rec 2 Touch Read | N/A | 11.5 | 12 |
| 32-460 | RMRCL W/SN W/RTR | Locking Cover w/Rec Touch Read | 27/32 | 11.5 | 12 |
| 32-461 | RMRCL W/LN W/RTR | Locking Cover w/Rec Touch Read | 1-1/32 | 11.5 | 12 |
| 32-462 | RMRCL W/SN W/2RTR | Locking Cover w/Rec 2 Touch Read | 27/32 | 11.5 | 12 |
| 32-463 | RMRCL W/LN W/2RTR | Locking Cover w/Rec 2 Touch Read | 1-1/32 | 11.5 | 12 |
| 32-464 | BRMRC | Baltimore Non-Locking Lid | N/A | 12 | 12 |
| 32-468 | BRMRCL W/SN | Baltimore Locking Lid | 27/32 | 12 | 12 |
| 32-469 | BRMRCL W/LN | Baltimore Locking Lid | 1-1/32 | 12 | 12 |
| 32-109 | RMRCL 215 CVR only W/SN | 15 In. Locking Cover | 27/32 | 15 | 17 |
| 32-110 | RMRCL 215 CVR only W/LN | 15 In. Locking Cover | 1-1/32 | 15 | 17 |
| 32-111 | RMRCL 215 CVR only W/SN W/TR | 15 In. Locking Cover Touch Read | 27/32 | 15 | 17 |
| 32-112 | RMRCL 215 CVR only W/LN W/TR | 15 In. Locking Cover Touch Read | 1-1/32 | 15 | 17 |
| 32-113 | RMRCL 215 CVR only W/SN W/2TR | 15 In. Locking Cover 2-Touch Read | 27/32 | 15 | 17 |
| 32-114 | RMRCL 215 CVR only W/LN W/2TR | 15 In. Locking Cover 2-Touch Read | 1-1/32 | 15 | 17 |
| 32-118 | RMRCL 215 CVR only W/SN W/RTR | Locking Cover, Rec. Touch Read | 27/32 | 15 | 24 |
| 32-138 | RMRCL 215 CVR only W/LN W/RTR | Locking Cover, Rec. Touch Read | 1-1/32 | 15 | 24 |
| 32-119 | RMRCL 215 CVR only W/SN W/2RTR | Locking Cover, 2 Rec. Touch Read | 27/32 | 15 | 27 |
| 32-139 | RMRCL 215 CVR only W/LN W/2RTR | Locking Cover, 2 Rec. Touch Read | 1-1/32 | 15 | 27 |



Non-Recessed Plastic Covers Only



- Non-recessed design allows assembly into Vestal non-recessed cast iron meter box rings
- Will fit Vestal RM-15, RM-18, RM-18X, RM-20, and RM-21 meter box rings
- H-20 load rated for pedestrian and light traffic
- Cover design allows for simple installation of radio read, AMR, and AMI brackets
- Engineered to resist extreme temperatures, UV sunlight, and chemical exposures

| Model No. | Description | Bolt | Lid | Weight | Vestal No. |
|--------------------------|--|---------|-------|--------|------------|
| P-RMCL w/SN | Locking Plastic Cover | 27/32" | 11.5" | 3 lbs. | 32-780 |
| P-RMCL w/SN w/ Sensus TR | Locking Plastic Cover, Sensus Touch Read | 27/32" | 11.5" | 3 lbs. | 32-780STR |
| P-RMCL w/LN | Locking Plastic Cover | 1-1/32" | 11.5" | 3 lbs. | 32-781 |
| P-RMCL w/LN w/ Badger TR | Locking Plastic Cover, Badger Touch Read | 1-1/32" | 11.5" | 3 lbs. | 32-781BTR |
| P-RMCL w/LN w/ Sensus TR | Locking Plastic Cover, Sensus Touch Read | 1-1/32" | 11.5" | 3 lbs. | 32-781STR |



Recessed Plastic Covers Only



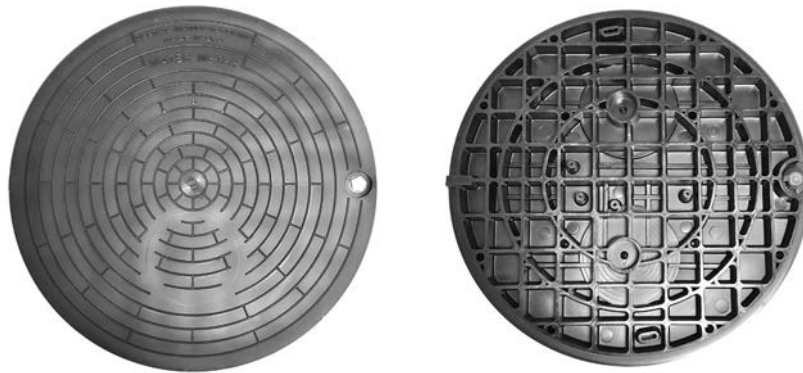
- Recessed design allows assembly into Vestal recessed cast iron meter box rings
- Will fit Vestal RMR-15, RMR-18, W-18, RMR-20, W-20 and RMR-21 meter box rings
- H-20 load rated for pedestrian and light traffic
- Cover design allows for simple installation of radio read, AMR, and AMI brackets
- Engineered to resist extreme temperatures, UV sunlight, and chemical exposures

| Model No. | Description | Bolt | Size | Wt. Lbs. | Part Code |
|---------------------------|-----------------------|--------|-------|----------|-----------|
| P-RMRCL w/SN | Locking Plastic Cover | 27/32 | 11.5" | 3 | 32-782 |
| P-RMRCL w/LN | Locking Plastic Cover | 1-1/32 | 11.5" | 3 | 32-783 |
| P-RMRCL w/SN w/Neptune TR | Locking Plastic Cover | 27/32 | 11.5" | 3 | 32-785 |



MONITOR COVERS ONLY – CAST IRON

| Part Code | Model # | Description | Bolt | Lid | Wt. |
|-----------|-----------------------------------|--|--------|-----|-----|
| 32-052 | #20 Cover Only W/SN | Locking Cover | 27/32 | 20 | 34 |
| 32-069 | #20 Cover Only W/LN | Locking Cover | 1-1/32 | 20 | 34 |
| 32-252 | #20 Cover Only W/SN W/TR | Locking Cover, Touch Read | 27/32 | 20 | 34 |
| 32-269 | #20 Cover Only W/LN W/TR | Locking Cover, Touch Read | 1-1/32 | 20 | 34 |
| 32-497 | #20 Cover Only W/SN W/RTR | Locking Cover, Recessed Touch Read | 27/32 | 20 | 34 |
| 32-498 | #20 Cover Only W/LN W/RTR | Locking Cover, Recessed Touch Read | 1-1/32 | 20 | 34 |
| 32-499 | #20 Cover Only W/SN W/2RTR | Locking Cover, 2 Recessed Touch Read | 27/32 | 20 | 34 |
| 32-500 | #20 Cover Only W/LN W/2RTR | Locking Cover, 2 Recessed Touch Read | 1-1/32 | 20 | 34 |
| 32-491 | #21 Monitor Cover Only W/SN | Ex. Heavy Locking Cover | 27/32 | 20 | 57 |
| 32-492 | #21 Monitor Cover Only W/LN | Ex. Heavy Locking Cover | 1-1/32 | 20 | 57 |
| 32-493 | #21 Monitor Cover Only W/SN W/TR | Ex. Heavy Locking Cover, Touch Read | 27/32 | 20 | 57 |
| 32-494 | #21 Monitor Cover Only W/LN W/TR | Ex. Heavy Locking Cover, Touch Read | 1-1/32 | 20 | 57 |
| 32-495 | #21 Monitor Cover Only W/SN W/RTR | Ex. Heavy Locking Cover, Recessed Touch Read | 27/32 | 20 | 57 |
| 32-496 | #21 Monitor Cover Only W/LN W/RTR | Ex. Heavy Locking Cover, Recessed Touch Read | 1-1/32 | 20 | 57 |
| 32-055 | MONITOR RING | Monitor Ring Only | N/A | N/A | 54 |



MONITOR COVERS ONLY – PLASTIC

| Vestal No. | Model No. | Description | Bolt | Lid | Weight |
|------------|--------------------------|---|--------|-----|---------|
| 32-784 | P-20 w/ SN | Plastic Monitor Lid | 27/32" | 20" | 14 lbs. |
| 32-808 | P-20 w/ SN w/ Sensus TR | Plastic Monitor Lid w/ 4-1/8" Recess TR | 27/32" | 20" | 14 lbs. |
| 32-809 | P-20 w/ SN w/ Badger TR | Plastic Monitor Lid w/ 3" Recess TR | 27/32" | 20" | 14 lbs. |
| 32-810 | P-20 w/ SN w/ Neptune TR | Plastic Monitor Lid w/ 4-1/2" Recess TR | 27/32" | 20" | 14 lbs. |

- Will fit Vestal Monitor Rings and Pit Rings
- H-20 load rated for pedestrian and light traffic
- Lid design allows for simple installation of radio read, AMR, and AMI brackets
- Under mounted brackets available for Badger, Sensus, Neptune, Itron, etc. antennas
- Engineered to resist extreme temperatures, UV sunlight, and chemical exposures

VESTAL MANUFACTURING
Sweetwater, TN 37874
800-456-9562



MONITOR RINGS & COVERS

| Part Code | Model # | Description | Bolt | Lid | Wt. |
|-----------|--------------------------------|---|--------|-----|-----|
| 32-056 | MONITOR R&C W/SN | Locking Ring & Cover | 27/32 | 20 | 88 |
| 32-070 | MONITOR R&C W/LN | Locking Ring & Cover | 1-1/32 | 20 | 88 |
| 32-256 | MONITOR R&C W/SN W/TR | Locking Ring & Cover, Touch Read | 27/32 | 20 | 88 |
| 32-270 | MONITOR R&C W/LN W/TR | Locking Ring & Cover, Touch Read | 1-1/32 | 20 | 88 |
| 32-478 | MONITOR R&C W/SN W/RTR | Locking Ring & Cover, Recessed Touch Read | 27/32 | 20 | 88 |
| 32-479 | MONITOR R&C W/LN W/RTR | Locking Ring & Cover, Recessed Touch Read | 1-1/32 | 20 | 88 |
| 32-501 | MONITOR R&C W/SN W/2RTR | Locking Ring & Cover, 2 Recessed Touch Read | 27/32 | 20 | 88 |
| 32-528 | MONITOR R&C W/LN W/2RTR | Locking Ring & Cover, 2 Recessed Touch Read | 27/32 | 20 | 88 |
| 32-090 | EX-HEAVY MONITOR R&C W/SN | Locking Ring & Cover | 27/32 | 20 | 112 |
| 32-091 | EX-HEAVY MONITOR R&C W/LN | Locking Ring & Cover | 1-1/32 | 20 | 112 |
| 32-290 | EX-HEAVY MONITOR R&C W/SN W/TR | Locking Ring & Cover, Touch Read | 27/32 | 20 | 112 |
| 32-291 | EX-HEAVY MONITOR R&C W/LN W/TR | Locking Ring & Cover, Touch Read | 1-1/32 | 20 | 112 |



MONITOR INNER LIDS

| Part Code | Model # | Description | Lid | Wt. |
|-----------|-----------------------------|---|-----|-----|
| 32-104 | Cast Iron Monitor Inner Lid | Inner Frost Lid for Monitor Ring and Cover* | 20 | 23 |
| 32-204 | Plastic Monitor Inner Lid | Inner Frost Lid for Monitor Ring and Cover* | 20 | 4 |

* Note: Fits ER-2024, ER-2030, ER-2036.



EXPANDA RINGS*

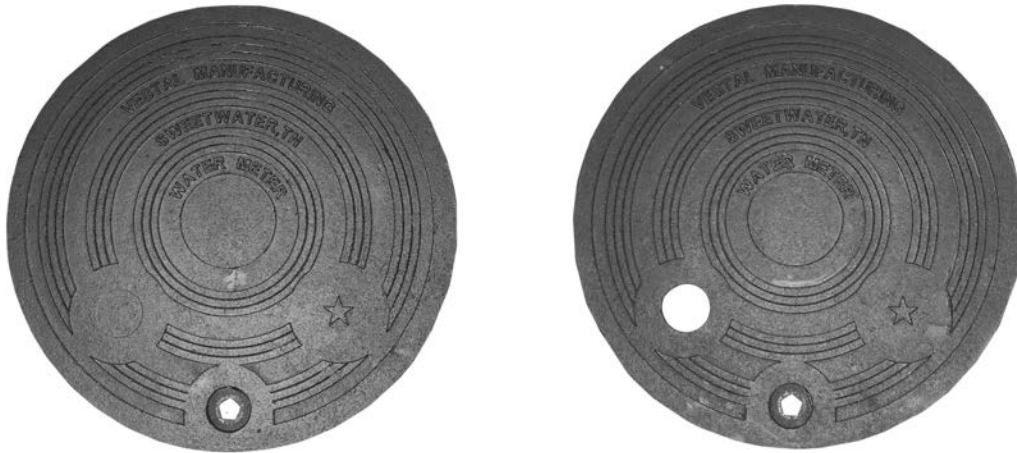
| Part Code | Model # | Description | Tile Size | Lid | Wt. |
|-----------|---------|---|-----------|-----|-----|
| 32-043 | ER-1824 | 26 1/2" (OD) Adapts 18" Cover to 24" Tile | 24 | 18 | 24 |
| 32-046 | ER-2024 | 26 1/2" (OD) Adapts 20" Cover to 24" Tile | 24 | 20 | 29 |
| 32-048 | ER-2030 | 33" (OD) Adapts 20" Cover to 30" Tile | 30 | 20 | 71 |
| 32-049 | ER-2036 | 36" (OD) Adapts 20" Cover to 36" Tile | 36 | 20 | 125 |

* Note: Vestal Expanda Rings can be added to RMC and Monitor Rings & Covers for larger pit sizes.



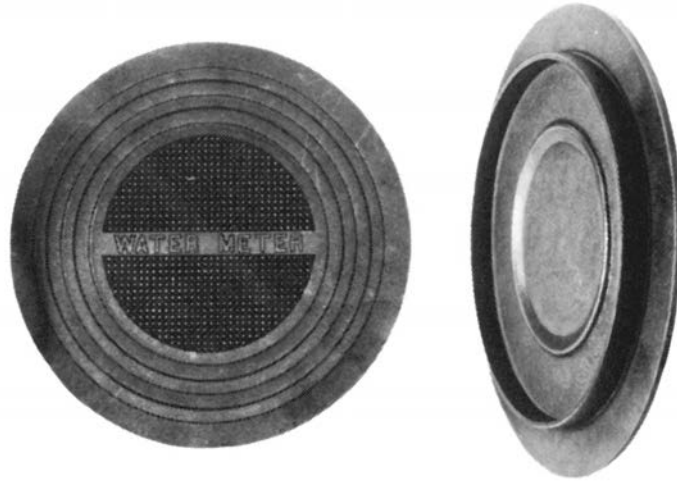
CAST IRON PIT RINGS & COVERS

| Part Code | Model # | Description | Tile Size | Bolt | Lid | Wt. |
|-----------|---------------|---------------------------------------|-----------|--------|-----|-----|
| 32-050 | 20 W/SN | Pit Ring & Standard Cover | 20 | 27/32 | 20 | 67 |
| 32-067 | 20 W/LN | Pit Ring & Standard Cover | 20 | 1-1/32 | 20 | 67 |
| 32-250 | 20 W/SN W/TR | Pit Ring & Standard Cover, Touch Read | 20 | 27/32 | 20 | 67 |
| 32-267 | 20 W/LN W/TR | Pit Ring & Standard Cover, Touch Read | 20 | 1-1/32 | 20 | 67 |
| 32-476 | 20 W/SN W/RTR | Pit Ring & Standard Cover, Rec. TR | 20 | 27/32 | 20 | 67 |
| 32-477 | 20 W/LN W/RTR | Pit Ring & Standard Cover, Rec. TR | 20 | 1-1/32 | 20 | 67 |
| 32-051 | 21 W/SN | Pit Ring & Heavy Cover | 20 | 27/32 | 20 | 91 |
| 32-068 | 21 W/LN | Pit Ring & Heavy Cover | 20 | 1-1/32 | 20 | 91 |
| 32-251 | 21 W/SN W/TR | Pit Ring & Heavy Cover, Touch Read | 20 | 27/32 | 20 | 91 |
| 32-268 | 21 W/LN W/TR | Pit Ring & Heavy Cover, Touch Read | 20 | 1-1/32 | 20 | 91 |
| 32-116 | Pit Ring | Pit Ring Only | 20 | N/A | N/A | 35 |



CAST IRON FLAT PITSETTER COVERS

| Part Code | Model # | Description | Pit Size | Bolt | Wt. |
|-----------|--------------------|---------------------------------|----------|-------|-----|
| 32-140 | VF-15 | Non-Locking Cover | 15 | N/A | 21 |
| 32-141 | VF-15 w/TR | Non-Locking Cover, Touch Read | 15 | N/A | 21 |
| 32-142 | VF-15 w/2TR | Non-Locking Cover, 2 Touch Read | 15 | N/A | 21 |
| 32-145 | VF-15-L w/SN | Locking Cover | 15 | 27/32 | 21 |
| 32-146 | VF-15-L w/SN w/TR | Locking Cover, Touch Read | 15 | 27/32 | 21 |
| 32-147 | VF-15-L w/SN w/2TR | Locking Cover, 2 Touch Read | 15 | 27/32 | 21 |
| 32-150 | VF-18 | Non-Locking Cover | 18 | N/A | 29 |
| 32-151 | VF-18 w/TR | Non-Locking Cover, Touch Read | 18 | N/A | 29 |
| 32-152 | VF-18 w/2TR | Non-Locking Cover, 2 Touch Read | 18 | N/A | 29 |
| 32-155 | VF-18-L w/SN | Locking Cover | 18 | 27/32 | 29 |
| 32-156 | VF-18-L w/SN w/TR | Locking Cover, Touch Read | 18 | 27/32 | 29 |
| 32-157 | VF-18-L w/SN w/2TR | Locking Cover, 2 Touch Read | 18 | 27/32 | 29 |



CAST IRON WATER METER LIDS*

| Part Code | Model # | Description | Tile Size | Lid | Wt. |
|-----------|------------|---|-----------|-----|-----|
| 32-020 | WM-15 | Non-Locking Flat Water Meter Lid 18" OD | 15 | 18 | 19 |
| 32-220 | WM-15 W/TR | Non-Locking Flat Lid, Touch Read | 15 | 18 | 19 |

* Note: WM-15 features 1" deep rim, 14" diameter, recessed 2" from outside of lid



CAST IRON WATER METER LIDS*

| Part Code | Model # | Description | Tile Size | Lid | Wt. |
|-----------|-----------------------|---------------------------------|-----------|-----|-----|
| 96-357 | WM-18 | Non-Locking Water Meter Lid | 18 | 20 | 30 |
| 96-336 | WM-18 W/TR | Non-Locking, Touch Read | 18 | 20 | 30 |
| 96-331 | WM-18 W/2TR | Non-Locking with Two Touch Read | 18 | 20 | 30 |
| 96-036 | WM-18 W/RTR | Non-Locking w/Rec. Touch Read | 18 | 20 | 37 |
| 96-030 | Heavy Duty WM-18 W/TR | Non-Locking, Touch Read | 18 | 20 | 46 |

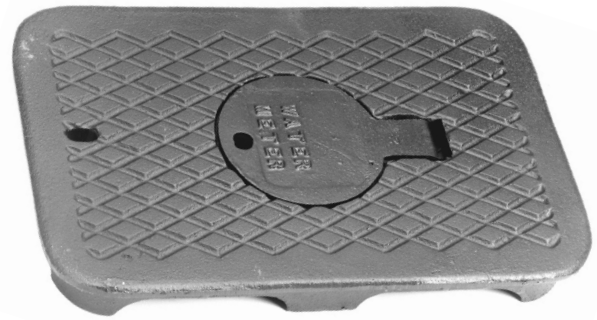
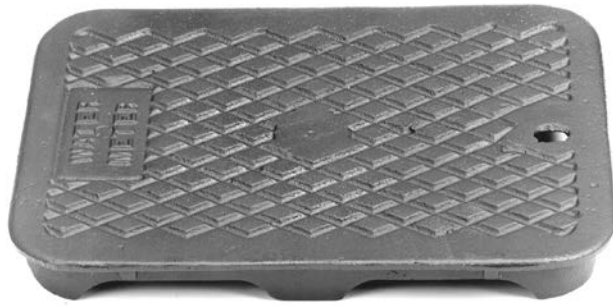
* Note: WM-18 features 1/4" deep rim, 17" diameter, recessed 1-1/4" from outside of lid.

* Lid can be marked Water Meter, Sewer, or Blank.



CAST IRON BELL RING & COVER

| Part Code | Model # | Description | Tile Size | Lid | Wt. |
|-----------|----------------|-------------------------------|-----------|-----------|-----|
| 32-077 | 18 Ring | Flat Bell Ring | 18 | 21 (OD) | 33 |
| 32-078 | 18 Cover | Bell Cover (Water Meter) | N/A | 10.5 (OD) | 10 |
| 32-279 | 18 Cover w/ TR | Bell Cover w/ Touch Read Hole | N/A | 10.5 (OD) | 10 |



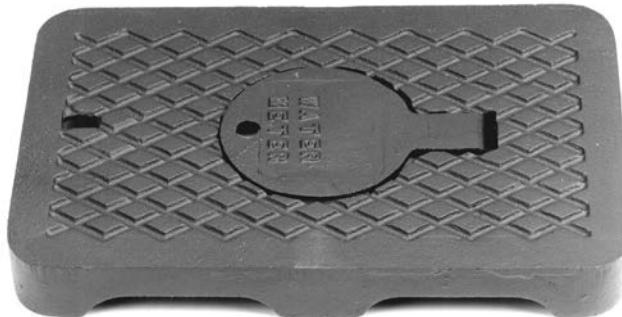
CAST IRON RECTANGULAR WATER METER LIDS WITH FLANGE

| Part Code | Model # | Description | Size | Wt. |
|-----------|-----------|-------------------------------------|-------------------|------|
| 96-002 | AF-1 | Top Mount Meter Lid | 10 7/8" x 15 7/8" | 17.5 |
| 96-003 | AF-1 W/TR | Top Mount Meter Lid with Touch Read | 10 7/8" x 15 7/8" | 17.5 |
| 96-004 | AFR-2 | Top Mount Meter Lid with Reader | 10 7/8" x 15 7/8" | 17.5 |



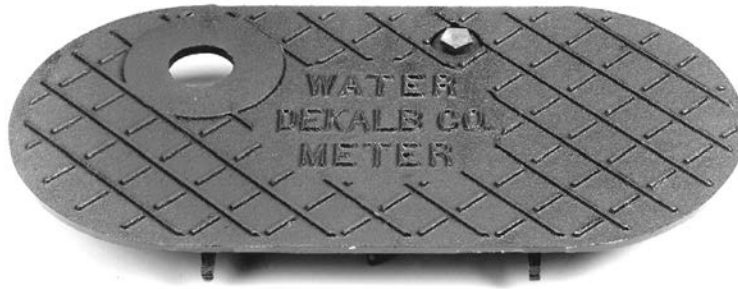
CAST IRON RECTANGULAR WATER METER LIDS WITH FLANGE

| Part Code | Model # | Description | Size | Wt. |
|-----------|-------------|-------------------------------------|-------------------|-----|
| 96-385 | F-4 | Top Mount Meter Lid | 11 1/4" x 16 1/2" | 12 |
| 96-337 | F-4 W/TR | Top Mount Meter Lid with Touch Read | 11 1/4" x 16 1/2" | 12 |
| 96-330 | 1419 T | Top Mount Meter Lid | 11 3/8" x 16 1/4" | 15 |
| 96-327 | 1419 T W/TR | Top Mount Meter Lid with Touch Read | 11 3/8" x 16 1/4" | 15 |



DROP-IN CAST IRON RECTANGULAR METER LIDS - FLANGELESS

| Part Code | Model # | Description | Size | Wt. |
|-----------|----------|-----------------------------------|-----------|-----|
| 96-143 | D-5 | Drop-In Meter Lid | 10" x 15" | 14 |
| 96-140 | D-5 W/TR | Drop-In Meter Lid with Touch Read | 10" x 15" | 14 |
| 96-144 | DR-6 | Drop-In Meter Lid with Reader | 10" x 15" | 15 |



CAST IRON OVAL WATER METER LIDS

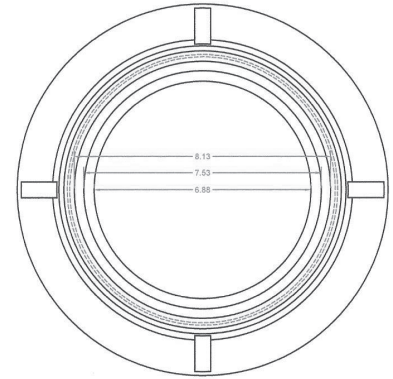
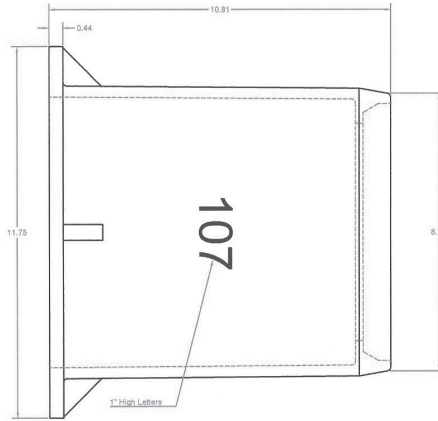
| Part Code | Model # | Description | Size | Bolt | Wt. |
|-----------|------------------------|--------------------------------------|-----------|-------|-----|
| 96-179 | Oval Cover w/ SN | Locking Oval Lid | 19" x 10" | 27/32 | 17 |
| 96-174 | Oval Cover w/ SN w/ TR | Locking Oval Lid with Touch Read | 19" x 10" | 27/32 | 17 |
| 96-161 | Oval Cover | Non-Locking Oval Lid | 19" x 10" | N/A | 17 |
| 96-162 | Oval Cover w/ TR | Non-Locking Oval Lid with Touch Read | 19" x 10" | N/A | 17 |



MUNICIPAL CASTING PRODUCTS

MUNICIPAL CASTINGS INDEX

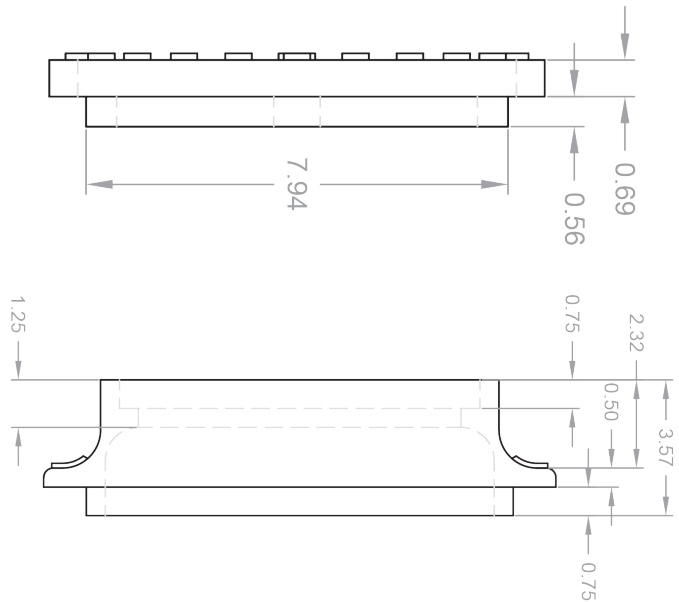
| | |
|----------------------------------|-----------------|
| Valve Box Ring & Cover | C-26 |
| Sewer Cleanout Ring & Cover..... | C26, C-27, C-28 |
| Valve Box Risers & Lids | C-29 |
| Valve Box Rings & Covers..... | C-30 |



VALVE BOX RING & COVER - 10" HIGH

| Vestal No. | Model & Description | Tile Size | Lid | Wt. |
|------------|---------------------------|-----------|-----|---------|
| 32-128 | V-107 Valve Box Lid Only | N/A | 8" | 12 lbs. |
| 32-129 | V-107 Valve Box Ring Only | 6.88" | N/A | 29 lbs. |

* Cover can be marked Water or Sewer.



SEWER CLEANOUT RING & COVER

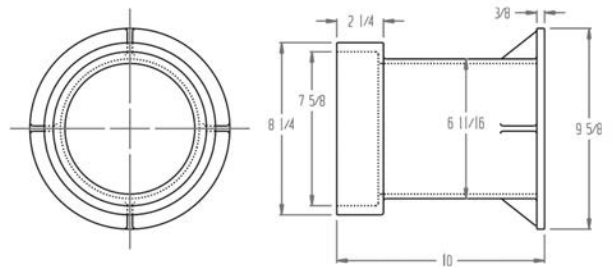
| Vestal No. | Model & Description | Tile Size | Lid | Wt. |
|------------|---------------------------|-----------|--------|---------|
| 32-135 | Springfield Sewer Cover | N/A | 9 3/8" | 15 lbs. |
| 32-136 | Springfield Cleanout Ring | 8 1/4" | N/A | 25 lbs. |



Sewer Cleanout Frame & Lids

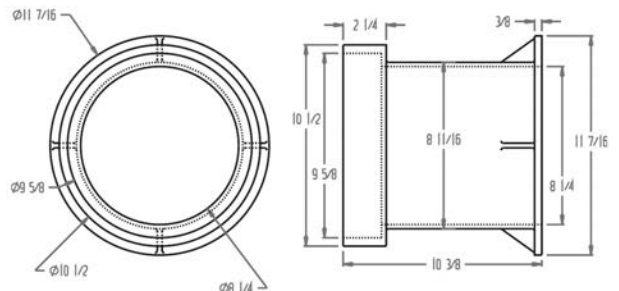
Model No. LH-6

- Fits over 4" diameter pipe & fittings.
- LH-6 accepts standard lid for 5-1/4" valve box.
- Standard lid marked Sewer. Available with Water and Storm.
- Intended for concrete, asphalt, grass or dirt installation.
- Accepts Vestal Valve Box Risers
- Total Weight - 29 lbs.
- Part Code 32-120



Model No. LH-10

- Fits over 6" diameter pipe & fittings.
- Standard lid marked Sewer. Available with Water and Storm.
- Intended for concrete, asphalt, grass or dirt installation.
- Total Weight - 53 lbs.
- Part Code 32-121

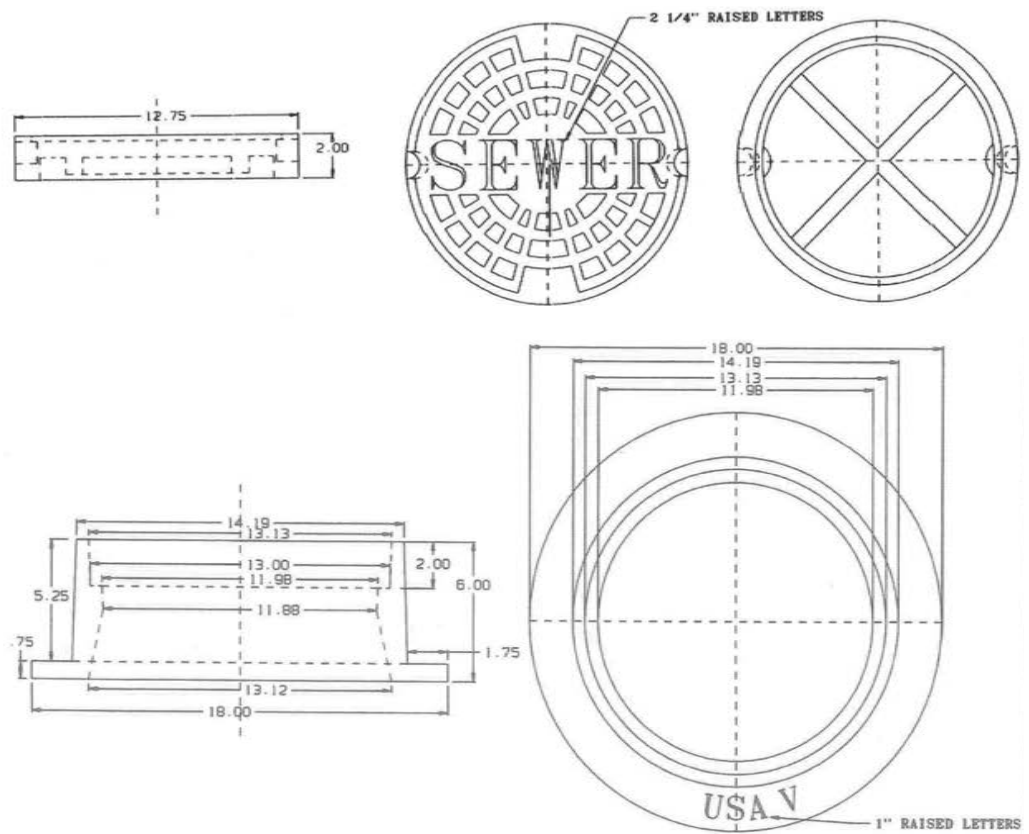




Sewer Cleanout Frame & Lids

Model No. LH-12

- Fits over 8" and 10" diameter pipe & fittings.
- Standard lid marked Sewer. Available with Water and Storm.
- Intended for concrete, asphalt, grass, or dirt installation.
- Total Weight - 110 lbs.
- Part Code 32-125





CAST IRON VALVE BOX LID*

| Part Code | Model # | Description | Tile Size | Lid | Wt. |
|-----------|---------|---------------------|-----------|-----|-----|
| 96-100 | T-5 1/4 | Skirted 5 1/4 Cover | 5 1/4 | 7 | 12 |

* Cover can be marked with Water, Gas, Storm or Sewer.



CAST IRON VALVE BOX RISERS*

| Part Code | Model # | Description | Tile Size | Lid | Wt. |
|-----------|---------|---------------------------------|-----------|-----|-----|
| 96-375 | 71 | 1" Valve Box Riser Domestic | 5 1/4 | 7 | 6 |
| 96-366 | 715 | 1 1/2" Valve Box Riser Domestic | 5 1/4 | 7 | 10 |
| 96-376 | 72 | 2" Valve Box Riser Domestic | 5 1/4 | 7 | 13 |
| 96-377 | 73 | 3" Valve Box Riser Domestic | 5 1/4 | 7 | 15 |
| 96-378 | 74 | 4" Valve Box Riser Domestic | 5 1/4 | 7 | 20 |
| 96-314 | 76 | 6" Valve Box Riser Domestic | 5 1/4 | 7 | 29 |

* Risers available with or without flanges.



CAST IRON VALVE BOX "MUSHROOM" LID*

| Vestal No. | Model # | Description | Tile Size | Lid | Wt. |
|------------|---------|-------------|-----------|------|-----|
| 96-145 | V-6 | Mushroom | 6" or 4" | 7.5" | 13 |

* Drops into a 6" pipe or will accept 4" pipe on inside.



CAST IRON VALVE BOX RING*

| Part Code | Model # | Description | Tile Size | Lid | Wt. |
|-----------|---------|----------------------|-----------|-----|-----|
| 96-367 | V-2194 | 5 1/4 Valve Box Ring | 6 | 7 | 15 |

* Use with #7 cover.



CAST IRON VALVE BOX COVER*

| Part Code | Model # | Description | Tile Size | Lid | Wt. |
|-----------|---------|------------------------|-----------|-----|-----|
| 32-035 | 7 | Standard 5 1/4 Drop-In | 5 1/4 | 7 | 7 |

* Cover can be marked with Water, Gas or Sewer.

* Use with V-2194 Ring.



CAST IRON 5 1/4 VALVE BOX RING & COVER*

| Part Code | Model # | Description | Tile Size | Lid | Wt. |
|-----------|-------------|--------------------|-----------|-----|------|
| 96-001 | 525 | 5 1/4 Ring & Cover | 6 | 7 | 17.5 |
| 96-098 | 5 1/4 COVER | 5 1/4 Cover Only | N/A | 7 | 9 |
| 96-099 | 5 1/4 RING | 5 1/4 Ring Only | 6 | 7 | 9 |

* Cover can be marked with Water, Gas or Sewer.



AIS COMPLIANT

Vestal Manufacturing Enterprises, Inc. certifies that all Vestal Municipal Casting products are in full compliance with the **American Iron & Steel (AIS)** requirements. Domestically poured and manufactured from our gray iron foundry in Sweetwater, Tennessee, Vestal products are “Crafted with Pride in the U.S.A.”

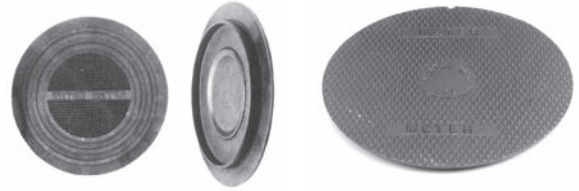
**Meter Box Rings
& Covers**



**Monitor Rings &
Covers**



Round Meter Pit Lids



Rectangular Lids



**Cleanout
Rings & Covers**



Valve Box Risers & Lids



**Cleanout Frames &
Lids**



Valve Box Rings & Lids



Specialty Castings

- City Names
- City Logos

**Contact the Vestal sales office for submittal drawings,
product questions or additional information.**



Vestal Manufacturing Enterprises, Inc.
P.O. Box 420 • Sweetwater, TN 37874
Phone: 800-456-9562 • Fax: 423-337-2003
www.vestalmfg.com





Be Green!



Environmentally Focused

- 100% of the iron used to make Vestal castings is **scrap metal**.
- Thousands of tons of **scrap metal**, that otherwise may be scattered across the country or dumped in landfills, are recycled annually.
- Approximately 96% of our green sand is **reclaimed** daily and reused in our molding process.
- Closed loop water system provides **reduced water** consumption by 20 million gallons of water annually.
- Energy **efficient lighting** in all Vestal office and manufacturing facilities.
- All excess cardboard is accumulated and sent to a recycling center.



VESTAL MANUFACTURING
Sweetwater, TN 37874
800-456-9562

TERMS AND GENERAL INFORMATION

TERMS:

Terms will be specified on each individual invoice. A service charge of 1 1/2% per month (18% ANNUAL RATE) will be assessed for all past due accounts. Where applicable, the service charge will be adjusted to meet state legal requirements.

PALLETIZING MATERIAL:

Certain Vestal products must be palletized for shipping at a net charge per pallet. There is also a net charge for heavy wooden shipping boxes. The boxes and pallets are not returnable.

DAMAGES, SHORTAGES OR LOSS IN TRANSIT:

Merchandise is inspected and counted before loading. Please inspect carefully on receipt of merchandise, noting any discrepancy or damage on the carrier's freight bill AT TIME OF DELIVERY.

Discrepancies or damage which obviously occurred in transit are the carrier's responsibility, and related claims should be made promptly, direct to the carrier. DEDUCTIONS FROM INVOICES FOR SHORTAGES OR DAMAGE CLAIMS WILL NOT BE ALLOWED.

Our responsibility as shipper ceases when goods are delivered in good order to the transportation company. We assume no liability for merchandise in transit. We will, however, render all possible assistance in recovering lost goods or in filing claims by consignee.

PRICES:

Subject to change without notice. All merchandise will be invoiced at prices in effect at time of shipment.

HANDLING CHARGE:

UPS shipments are assessed a \$4.00 charge per shipment. Quantities will be rounded up to the next even bundle unless specifically requested, then special charge will apply. A special \$5.00 handling charge will also be assessed on any product when quantity ordered is less than standard package.

RETURN GOODS:

Return goods will not be accepted without written authority from Vestal Manufacturing. A minimum charge of 10% will be made for handling, inspecting and repackaging items returned for credit. All returned goods must be shipped transportation charges prepaid. DEDUCTIONS FROM INVOICES FOR DAMAGES, DEFECTIVE, AND SHORTAGE CLAIMS WILL NOT BE ALLOWED.

TAXES:

Prices do not include sales, excise, transportation and other similar taxes present or future.

DELIVERY:

Shipments and deliveries are, at all times, subject to approval of our Credit Department. Delivery is contingent on floods, strikes, acts of God, or any other causes beyond our control.

MODEL NUMBER:

When placing orders, please give model number.

PLANT CLOSINGS:

Vestal Manufacturing always closes the weeks of July 4th and December 25th. No shipping, receiving, or production will occur during these times.

METER BOX RINGS & COVERS



Monitor Rings & Covers



Sewer Cleanouts



Yoke Bars



Flat Locking Covers



Valve Box Risers



Valve Boxes



For over 75 years Vestal Manufacturing has been producing gray iron castings using American labor, techniques and materials.

Whatever your requirements, Vestal will work with you to produce high quality castings for your particular application.

VESTAL MANUFACTURING ENTERPRISES, INC.

P.O. Box 420 • Sweetwater, TN 37874

(423) 337-6125 • USA WATS 1-800-456-9562

Fax 423-337-2003

Email: vestal@vestalmfg.com

Website: www.vestalmfg.com

